

Magnus
Theatre

Mama's Country Record Collection

A Country Musical
featuring music from the 60s and 70s

Conceived and written
by Thom Currie

Original Musical Arrangements
by Meredith Zwicker

July 6 - 29, 2023

"An amazing collection of hits." Simcoe Reformer

**"Mama's Country Record Collection is a keeper,
just like some of Mama's records." Welland Tribune**

**"Entices the audience to clap their hands, stomp their feet or
sing to songs they didn't think they even remembered ...**

**A must see whether or not you like country music."
The BEAT Magazine**



Canada Council
for the Arts

Conseil des arts
du Canada



ONTARIO ARTS COUNCIL
CONSEIL DES ARTS DE L'ONTARIO
an Ontario government agency
un organisme du gouvernement de l'Ontario



Ontario Trillium
Foundation
An agency of the Government of Ontario
Un organisme du gouvernement de l'Ontario



Fondation
Trillium
de l'Ontario



ONTARIO CULTURAL ATTRACTIONS FUND
LE FONDS POUR LES MANIFESTATIONS
CULTURELLES DE L'ONTARIO



Artistic Director
Thom Currie

^W
Magnus
Theatre

Executive Director
Alexis Rowlinson

Mama's Country Record Collection

**A Country Musical featuring music of
the 60's and 70's**

Conceived and Written by Thom Currie

Original Musical Arrangements by Meredith Zwicker

THE COMPANY

DANNY JOHNSON Bruce
SAMANTHA PIPER Caitlin

DAN ZADKOVICH Bass, Double Bass, Electric
Guitar, Banjo, Back Up Vocals
ROBERT JARDINE Steel and Dobro Guitar, Bass,
Acoustic Guitar
KEVIN PALMER Drums, Back Up Vocals

THOM CURRIE Director
GILLIAN JONES Stage Manager
DANNY JOHNSON Musical Director
MEREDITH ZWICKER Original Musical Arrangements
LISA MACCHIONE Costume Design
NADIA CHEECHOO Head of Properties
WARDEN B É MONT Set and Light Design
TIM STEPHENSON Sound Design
DAVID BROWN Head Carpenter
NICHOLAS PALINKA Production Manager
TIM WALTERS Production Assistant
AUTUMN LECLAIR Production Student

The videotaping or other video or audio recording of this production is strictly prohibited. Approximate run time: 120 minutes with one 15 minute intermission.

Mama's Country Record Collection was first produced in July, 2010, at the Showboat Festival Theatre In The Round, Port Colborne, Ontario, Canada

All music used in this production is subject to international copyright, and used with permission of SOCAN (The Society of Composers, Authors and Music Publishers of Canada)



At Tbaytel, we believe the arts enhance quality of life and are a key part of building more vibrant communities.

Supporting Magnus Theatre is our way of helping to make our neighbourhood a better place for everyone.

We're in it together

tbaytel for good.



Thom Currie (Playwright, Director) is a director, playwright, dramaturg, actor and producer who has worked in theatres across Canada and Europe and is currently Artistic Director of Magnus Theatre in Thunder Bay.

Prior to Magnus, Thom was Artistic Director of the Stephenville Theatre Festival (NL), Managing Artistic Director at The Showboat Festival Theatre In The Round (ON), Artistic Director of The Georgian Theatre Festival (ON) and Founding Artistic Director of Really Little Theatre (INTL). Thom has directed over 100 productions in his career, in spaces ranging from arenas in Regina to third floor walk-up apartments in Paris. This is not his first tent.



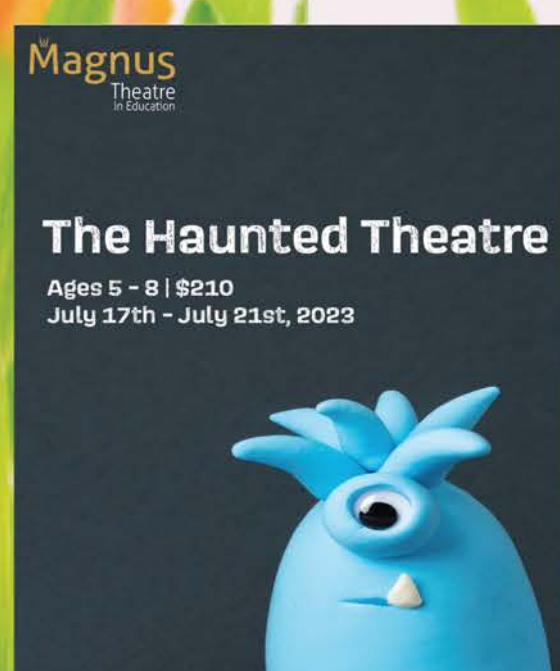
2023 SUMMER CAMPS REGISTER NOW!

The Hero's Journey
Ages 9 - 12 | \$240
July 10th - July 14th

The Haunted Theatre
Ages 5 - 8 | \$210
July 17th - July 21st

Mystery and Mayhem
Ages 9 - 12 | \$240
July 24th - July 28th

**Speak the Speech:
A Summer
Shakespeare Experience**
Ages 13 - 18 | \$675
July 31st - August 26th



TO REGISTER:

Call the Box Office at 807-345-5552 or
Register online at magnustheatre.com/theatre-classes/

91-5 ckpr

THUNDER BAY'S RADIO STATION



CKPR.COM



Danny Johnson (Bruce, Musical Director) is no stranger to theatre audiences, having performed in over sixty productions across the country, including *Million Dollar Quartet* (Sam Phillips), *Ring Of Fire* (Johnny Cash), *2 Pianos 4 Hands*, *Buddy: The Buddy Holly Story* (Norm Petty), and portraying Hank Williams in *Hank Williams: The Show He Never Gave* to sold-out performances and standing ovations at Magnus; and was the Musical Director for the world premiere of Tomson Highway's *The (Post) Mistress*. He is a well-respected singer/songwriter who has performed at venues and festivals and has opened for many acclaimed acts, including Bob Dylan, The Tragically Hip, Colin James, George Jones, Valdy and Johnny Cash. As a musician he has performed with such artists as Bo Diddley, The Temptations, Bob Newhart, Paul Shaffer, Hal Linden, Red Skelton, Bob Hope, Tom "Bones" Malone, Jack de Keyzer, Long John Baldry, Tony "Little Sun" Glover, Paul James and Vishwa Mohan Bhatt. Danny has worked as engineer/producer for dozens of acclaimed album and film projects at his facility, Danalog Studio. His production of *Into The Wonder*, for The Gryphon Trio and TBSO, on the Analekta label was nominated for a Juno. He is excited to be back as Bruce again and sharing the stage with such talented people. Enjoy the show!



Samantha Piper (Caitlin) is delighted to be making a return to the Magnus stage in *Mama's Country Record Collection*. Previously seen by Thunder Bay audiences as "Crystal" in *Back in '59*, and "Judy" in *Perfect Wedding*, Samantha is an actor, musician, teacher, and visual artist who hails from Guelph, ON where she lives with her partner, and her sweet pup. She is a proud graduate of Sheridan Institute's Music Theatre Performance program, and has been

working in the industry for over a decade. Other credits include: ***Kinky Boots*** (Mirvish Productions), “Beatrice” in ***Much Ado About Nothing*** (The Rose Theatre Brampton), and “Jill” in ***Spring Fever*** (Smile Theatre). Big thanks to Sandie and the NLM team. All of my love to JRN, and Bowie.

Ken Boshcoff
Community Foundation



*Proud Supporter of
Magnus Theatre*



Dan Zadkovich (Bass, Double Bass, Electric Guitar, Banjo, Back Up Vocals) has been highly active in the local music scene for several years playing all styles of music with various groups and performers. He received

his Music degree from Lakehead University in 1996 and has been teaching and coaching at The Lakehead School of Music for over 20 years.



Robert Jardine (Steel and Dobro Guitar, Bass, Acoustic Guitar) was born and raised in Chapleau, ON. He studied music at Cambrian College, Sudbury. A resident of Thunder Bay, Rob has been the Audio Director

of the Thunder Bay Community Auditorium since 1985. A member of the American Federation of Musicians, Rob presently performs with The Chain, and Chris Krienke and Strawdawg, local musical artists.



Kevin Palmer (Percussion, Backup Vocals) has worked in Australia, Germany, the Dominican Republic, USA and Canada as a Registered Professional Marketer and Chairman of the Board of the Canadian Institute

of Marketing. He is the studio recording drummer for “The International Project” and has held touring positions as a drummer/backing vocalist with “Bon Journey Canada”, “Livewire”, as well as live appearances across the Province at various Festivals & Events over the past 15 years.



Gillian Jones (Stage Manager)

This is my bio all about how, my life got flipped turned upside down and I'd like to take a moment before the show starts to tell you how I became involved in the live arts. In North Thunder Bay, I was born and raised. On a playground is where I spent most of my days. Chillin out max and relaxin all cool, but never shootin' B-ball outside of the school. When a couple of folks who were up to some good, started a rehearsal in my neighbourhood. I worked on one little show and my boss was eager to offer me a job here at Magnus Theatre. Nice to be back in the theatre again.

Signature

FINANCIAL

Manage your business. Let us do the rest.

signaturefinancial.ca

Consumers

FINANCIAL SERVICES

Building life long relationships by putting our client's needs first.

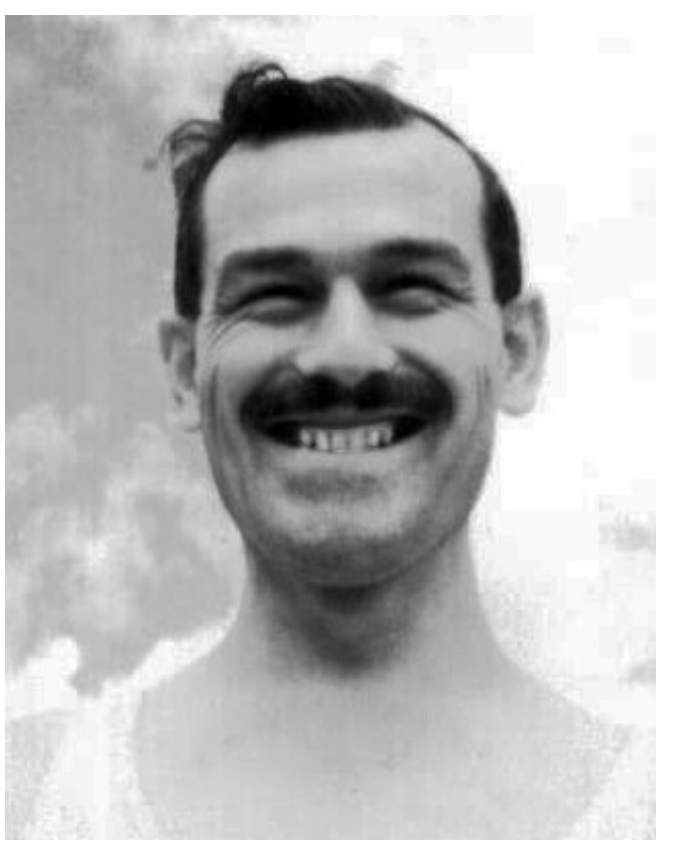
consumersfinancialservices.ca



Lisa Macchione (Costume Design) is a passionate devotee of the performing arts and all things adornment. In 1999 she graduated from Seneca College's Fashion Arts program and has had the opportunity to use her skills in costuming to work on set of local films, historical reenactments as well as her own performance art. Researching characters, creating one of kind pieces, and the spark of a thrift store treasure hunt are what she enjoys most. She is thrilled to join the team of creative crew and cast at Magnus Theatre.



Nadia Cheechoo (Head of Properties) is an Indigenous woman from Wikwemikong, Ontario. She is back at Magnus Theatre, adding yet another position to her repertoire. She has had previous props experience working in film, but this is her first time in this position at Magnus. With carpentry and wardrobe already under her belt, she's ready to continue honing old and new skills. Then she plans to carry those skills into future shows, theatres, and film projects. Magnus Theatre has been a major stepping stone in her career as an artist, and she hopes to continue to share her skills with them and others.



Warden Bémont (Set and Light Design) has designed for theatres across Canada. In addition to his designs for Magnus (including ***The Rocky Horror Show, Only Drunks & Children Tell The Truth***), some of Ward's favourite designs include ***Peter Pan, A Bench In The Sun*** (Georgian Theatre), ***A Closer Walk With Patsy Cline*** and ***Blue Champagne*** (Stephenville Theatre Festival), ***Last of the Red Hot Lovers, Back In 59, Mama's Country Record***

Collection (Showboat Festival) and **Urinetown** (Theatre Aurora). Warden lives in Owen Sound and does his best to speak only in French at home. He is very happy to work with Thom again, and feels they have come a long way since *Kleines verlorenes Kaninchen* in 1992.



Tim Stephenson (Sound Design) is a production award winning graduate from the Ontario Institute of Audio Recording Technology. In the years since graduation he has worked as an Audio Technician at the Thunder Bay Community Auditorium setting up some of the biggest shows to come to Thunder Bay.



David A. Brown (Head Carpenter) joined Magnus four seasons ago as the head carpenter after working as the canoe builder /shipwright at Old Fort William for 40 years. Canoe and boat building were his main jobs

but Dave wore many hats while at the Fort and has been involved in many movie and television productions. From an “I-Max” production in the early 1980’s to many commercials and print productions. Appearing in National Geographic and the National Enquirer in the same year. He was heavily involved in “Haunted Fort” building many props, animatronic effects and enjoys lighting things up as a “licensed pyrotechnician.”. Dave enjoys the new challenges at Magnus and is getting used to building square and level, he would still like everything to be curved like a canoe or boat.

No Scents Makes Sense!

Due to the number of people with allergies, Magnus Theatre strives to be a scent-free theatre. Please avoid using perfumes, colognes or other scented products prior to the show.

In case you were looking for him...
We found him.

Thunder Bay's Favourite
Morning Show is now here.

mornings in the bay
with Danny Foresta

999 #THE BAY

999thebay.ca

70's, 80's & 90's



Nicholas Palinka (Production Manager) is the current Production Manager at Magnus Theatre and would like to thank Dave, Nadia, Lisa and Tim for your hard work throughout the season. Nadine, thank you for your support, without you I wouldn't have been able to have a career in the arts. If you've read this far, thanks and enjoy the show!



Tim Walters (Production Assistant) didn't start his journey in theatre from a young age, but he did perform in a production of *Hairspray* at St. Ignatius Highschool as a handful of smaller characters, and in another

local production of ***Joseph and the Amazing Technicolor Dreamcoat*** playing the accordion. Those productions introduced him to the wild, wacky, and hectic world of live theatre. He first started working with Magnus Theatre in 2018 on the production of ***Back in '59*** as a sound tech assistant under Jean-Paul De Roover of Blueprints Audio. He has done a little bit of everything while working at Magnus, building sets, hanging lights, pitching the new saddle-span tent, running sound, controlling cameras, working backstage, and playing accordion on stage. Tim has been involved in several past productions at Magnus including: ***Back in '59, Rocky Horror Picture Show, A Christmas Carol, SHOUT, Home: A Bluegrass Celebration, Man of La Mancha, Dock Spider, and Hand to God***. Tim is very grateful to be continuously called back to work with the great community at Magnus Theatre. When not working with Magnus he is a private accordion teacher, performer, composer, and free-reed aerophone instrument repairer.



Autumn Leclair (Production Student) is excited to be a Production Assistant for Mama's Country Records. She is a film student at Confederation College and aspires to be a

cinematographer. She's worked on multiple short films and this is her first time on crew in theatre. Autumn grew up in Thunder Bay participating in theatre classes at Magnus Theatre and loves the art of live theatre. Enjoy the show!



74th SEASON

A CHRISTMAS CAROL

EVERY MAN HAS THE POWER TO DO GOOD

BY JAMES HUTCHISON

DIR. THOMAS MCDONALD

**NOVEMBER 29 -
DECEMBER 2 &
DECEMBER 6 - 9,
2023**

THE SNOW QUEEN

PLAYWRIGHT TBA

DIR. JESSICA GRAHAM

**MARCH
6 - 9 & 13 - 16,
2024**

SLEUTH

BY ANTHONY SHAFFER

DIR. STEFANI CELINE

**MAY 22 - 25 &
MAY 29 - JUNE 1,
2024**

CAMBRIANPLAYERS.COM



The Songs In Mama's Country Record Collection

9 To 5 by Dolly Parton (BMI); Velvet Apple Music (BMI), Warner-Tamerlane Pub (BMI)

Always On My Mind by John L Christopher Jr (BMI), Mark James (BMI), Wayne Carson Thompson (BMI); Bike Music (BMI), Budde Songs Inc. (BMI), Lovolar Music (BMI), Screen Gems EMI Music Inc (BMI)

Back Home Again by John Denver (ASCAP); Dino Park Publishing (ASCAP), JD Legacy Publishing (ASCAP), My Pop's Songs (ASCAP)

By The Time I Get To Phoenix by Jim Webb (ASCAP); EMI Sosaha Music INC (BMI), R2M Music (BMI), Songs of Lastrada (BMI)

Chug A Lug by Roger Miller (BMI); Sony ATV Tree Publishing (BMI)

Coal Miner's Daughter by Loretta Lynn (BMI); Sure Fire Music Company INC (BMI)

Coat of Many Colors by Dolly Parton (BMI); Velvet Apple Music (BMI)

Country Boy by Dennis Earl Lambert (BMI), Brian August Potter (BMI); Songs of Universal INC (BMI)

Coward of the County by Billy Edd Wheeler (ASCAP), Roger Dale Bowling (BMI); Universal Music Careers (BMI)

D I V O R C E by Claude Putman Jr (BMI), Robert Valentiune Braddock (BMI); Sony/ATV Tree Publishing (BMI)

Dang Me by Roger Miller (BMI); Sony ATV Tree Publishing (BMI)

Dead Skunk by Loudon S Wainwright (ASCAP); Frank Music Corp (ASCAP)

Delta Dawn by Larry Collins (ASCAP), T Alex Harvey (BMI); EMI April Music Inc (ASCAP), EMI U Catalogue Inc(ASCAP)

Do Wacka Do by Roger Miller (BMI); Sony ATV Tree Publishing (BMI)

Don't Bury Me by John E Prine (BMI); Soure Grapes Music Inc (ASCAP), Walden Music Inc (ASCAP)

Don't Come Home A Drinkin' by Loretta Lynn (BMI), Peggy Sue Wells (BMI); Sure Fire Music Company INC (BMI)

Don't It Make My Brown Eyes Blue by Richatrd C Leigh (SESAC); EMI U Catalogue (ASCAP)

Engine Engine # 9 by Roger Miller (BMI); Sony ATV Tree Publishing (BMI), Autumn Heir Publishing (BMI), Roger Miller Music INC (BMI)

From Both Sides Now by Joni Mitchell (ASCAP); Sony/ATV Tunes LLC (BMI), Crazy Crow Music

Galveston by Jimmy L Webb (ASCAP); Jobette Music Co INC (ASCAP)

Games People Play by Joe South (BMI); Sony/ATV Songs LLC (BMI)

Gentle On My Mind by John C Harford (BMI); Sony/ATV Melody (BMI)

Grandma's Feather Bed by Jim Connor (BMI); BMG Sapphire Songs (BMI), Reservoir One America (BMI)

Green Green Grass Of Home by Claude Putman Jr (BMI); Sony/ATV Tree Publishing (BMI)

**The Songs In Mama's Country Record Collection
continued...**

Harper Valley PTA by Tom T Hall (BMI); Unichappell Music Inc (BMI)

Hello Darlin by Harold L Jenkins (BMI); Sony/ATV Tree Publishing (BMI)

Here You Come Again by Barry Mann (BMI) Cynthia Weill (BMI); Dyad Music LTD (BMI), Screen Gems-EMI Music INC (BMI)

I Will Always Love You by Dolly Parton (BMI); Velvet Apple Music (BMI)

If You Love Me (Let Me Know) by John Henry Rostill (PRS); EMI Al Gallico Music Corp (BMI)

Jolene by Dolly Parton (BMI); Velvet Apple Music (BMI)

King Of The Road by Roger Miller (BMI); Sony ATV Tree Publishing (BMI)

Rhinestone Cowboy by Laurence Weiss (ASCAP); W B Music Corp (ASCAP)

Rocky Mountain High by John Denver (ASCAP), Michael C Taylor (ASCAP); BMG Ruby Songs (ASCAP), JD Legacy Publishing (ASCAP), Reservoir Media Music (ASCAP)

Ruby (Don't Take Your Love To Town) by Mel Tillis (BMI); Universal Cedarwood Publishing (BMI)

She Believes In Me by Stephen M Gibb (ASCAP); Universal Polygram International Publishing (ASCAP)

Stand By Your Man by Billy Sherrill (BMI), Tammy Wynette (BMI); EMI Al Gallico Music Corp (BMI)

Sunshine On My Shoulders by John Denver (ASCAP), Richard L Kniss (ASCAP), Michael C Taylor (ASCAP);

BMG Ruby Songs (ASCAP), JD Legacy Publishing (ASCAP), Reservoir Media Music (ASCAP)

Take Me Home, Country Roads by John Denver (ASCAP), Mary Catherine Danoff (ASCAP), William T Danoff (ASCAP); BMG Ruby Songs (ASCAP), JD Legacy Publishing (ASCAP), Reservoir Media Music (ASCAP)

Thank God I'm A Country Boy by John Martin Sommers (ASCAP); BMG Ruby Songs (ASCAP), Chrysalis One Music Publishing Group Ireland Limit (NS)

The Gambler by Donald Alan Schlitz; Sony/ATV Cross Keys Publishing (ASCAP)

The Most Beautiful Girl by Rory Michael Bourke (BMI), Billy N Sherrill (BMI), Norris D Wilson (BMI); EMI Al Gallico Music Corp (BMI), EMI Algee Music Corp (BMI)

When Will I Be Loved by Phil Everly (BMI); Everly and Sons Music (BMI), SONY/ATV Acuff Rose Music (BMI)

Wichita Lineman by Fritz Kalkbrenner (GEMA); Ultra Empire Music (BMI)

You Ain't Woman Enough by Loretta Lynn (BMI); Sure Fire Music Company INC (BMI)

You Can't Rollerskate In A Buffalo Herd by Roger Miller (BMI); Sony ATV Tree Publishing (BMI)

You're Looking At Country by Loretta Lynn (BMI); Sure Fire Music Company INC (BMI)

Magnus Theatre is the only professional theatre company between Winnipeg and Barrie, Ontario.



Artists engaged in Magnus Theatre productions are members of Canadian Actors' Equity Association, a national association representing artists working in theatre, opera and dance from coast-to-coast-to-coast. Equity's membership includes performers, directors, choreographers, fight directors and stage managers.



Magnus Theatre is a proud member of the Professional Association of Canadian Theatres. PACT is a member-driven organization of professional Canadian theatres which serves as the collective voice of its members for the betterment of Canadian professional theatre.



Associated Designers of Canada is a national, professional non-profit arts service organization dedicated to representing the interests of set, costume, lighting, projection and sound designers working in the live performing arts in Canada.



SOCAN is a performing rights society that licenses the public performance and communication of the world's repertoire of copyright-protected musical works in Canada and then distributes royalties to its members and affiliated international societies.

O'Neill Associates is proud to be a Community Business Partner with Magnus Theatre. Congratulations and best wishes on its 50 years of excellence.



O'NEILL ASSOCIATES

Human Resource, Labour and Employment Lawyers

Annual Fund Donations

July 4th 2022 - July 4th 2023

Major Benefactors between 2000.00 and 1000000.00

Maurice and Jacqueline Black
Larry Jones
Kinna Aweya Legal Clinic

Benefactors between 500.00 and 1999.99

Karon, Joel and Kayla Charban
Ron and Mary Ann Currie
Susan Southcott and Jean Robillard
Rosalie and Ken Evans
Bruce and Eda Leaman
David Legge and Shelley Crawford
Marg and Tom Loghrin
Dina Morrone
Guy O'Brien
Margaret and William Potter
Teresa Przybylski
Brian Richmond
Carol Rusak
Estate of Ollie Sawchuk
Jim and Sherley-Ann Smith

Patrons between 200.00 and 499.99

Allstate
Barbara-Jean and George Bennett
Sylvia Bilec
Warren Mouck
Phyllis and Dale Callaghan
Paul and Margaret Capon
Brooke Carfagnini
Richard Caron
Georgina Daniels
Molly Denson
James DiGiuseppe
Mary Louise and Peter Doig
Lauren Fedoruk
Maureen Ford
Olga Gernat
Al Harper
Anastasia Jacobson
Richard and Joan Johns
Trudi Jones
Shelby Jorgenson
Sylvia Kayzer
Kim Koivukoski
Lucy Laframboise
Ed and Beth Long
Mary Ann Mountain
Jane and David Mutrie
Donna and Glen Paterson
Lynne Peters
Jan Pilley
Wayne Edmunds and Linda Rintamaki
Ian and Shirley Robson

Monica Smith
Judy Speer
Brienne Tucker
Rachel Warburton
Laurence Waring
Sheila and David White
Joseph Winterburn

Supporters between 100.00 and 199.99

Jeanne Adams
Alan Moon
Bruce and Bonnie Anderson
Susan Bithrey
Carol Bruni
Don and Judy Caron
Evelyn and Bruce Creed
Vicki Dodick
Peter J. Neelands
C. Figus
Kathy Harris
Patricia Inch
Norman and Marianne Kortes
Mary Jane Lewandowski
Gary and Christina Lofts
Frank and Helen MacDiarmid
Angie Maltese
Marilyn Marrier-Oborne
Gail Marshall
Dorothy Martell
Debbie and Steve McAuley
Betty McCormack
Gloria McKay
Sharon McKinnon
Shirley Mirabelli
Maiya Nevrensan
Elaine Niemi
Norma A. Otway
Robert Perrier
Warren and Sheila Peterson
Elizabeth Poulin
Marion Poutanen
Dolly Readman
Cathy Ridley and Jim Lees
Viola Ruzansky
Dennis and Susan Siczkar
Deirdre Spain
Agnes Speight-Pritchard
Gladys Viehbeck
Walter and Marika Warywoda
Ken Whitney and Marilyn Whitney
June Wozny

Associates between 0.01 and 99.99

Jarvis and Marilyn Beyak
Charles & Sharon Campbell
Lynda Chandler
Deanna Craig

E. Cramm & B. Ratcliff
Marie Currie
Craig Davis
Tom and Pam Dawes
James and Florence Fawcett
Susan and Stephen Follis
Laurie Garred
Kevin C. Hill
Catherine Jillings
Barbara and Vladimir Kruzick
Hanna Laaksonen
Jennifer Lailey
Mary Jean Larocque
Verle Lawrence
Dana MacMillan
Kerry Malone
Joan Ashlee
Sheila Miller
Michael and Bruniana Morrow
Judy Mostow
Inderjit Nirdosh
Ingrid Paterson
Linda and Gord Pauluik
Marion Petersen
Heather Haig
Pat Piaskowski
Darrell & Melissa Sdao
Elizabeth Shea
Patti Snowden
Corinne Stewart
Lisa Toppozini
Joan Wheeler

Next Stage & Capitol Campaign

Debbie and Steve McAuley
Helen & Greg Alexander
Kirsten Chlebovec
Stephen and Noel Jones
Jordan Lester in Honour of Susan Lester
Allison Hill
Laura Spiller
Dyan and Rick Kuluski
David and Erminie Reid
Sandra Snider

Theatre in Education

Bryan & Anne MacLeod
Shelby Ch'Ng
Sean Albanese
Ms. Pamela Cain
Danielle Chandler

In Memoriam

In Memory of Grace Rapino-Hay
Trudi Jones

In Memory of Elaine Waring

Laurence Waring
David and Erminie Reid
Ulla and Mauri Ahokas
Hanna Mannila
Jo-Anne Iwasa
Lakehead Public Schools
Kathleen Eyjolfson
Kim Koivukoski

In Memory of Patricia Hobbs

Scott, Shannon, & Steven Hobbs

In Memory of Kelly Mehagan

Jerron Fuchichara
Sandra Snider

The Benefits of Sponsorship

Magnus Theatre's sponsorship benefits package is extensive and includes acknowledgement in publicity material, advertising space in show programs and tickets.

If you would like to find out more about sponsorships, please call Alexis Rowlinson, Executive Director, at (807) 345-8033 or mail executivedirector@magnustheatre.com

**You Can Donate To Magnus Theatre Anytime
Via Our Website!**

Saluting Our Sponsors

Season Sponsors



Show Sponsors



Presenting Sponsor/Community Partner

**Ken Boshcoff
Community Trust**

Access to Arts Sponsors



Community Partners



Funding Support

Canada



Canada Council
for the Arts

Conseil des arts
du Canada



ONTARIO ARTS COUNCIL
CONSEIL DES ARTS DE L'ONTARIO

an Ontario government agency
un organisme du gouvernement de l'Ontario

Ontario 

Ontario
Trillium
Foundation



Fondation
Trillium
de l'Ontario

An agency of the Government of Ontario
Un organisme du gouvernement de l'Ontario



ONTARIO CULTURAL ATTRACTIONS FUND
LE FONDS POUR LES MANIFESTATIONS
CULTURELLES DE L'ONTARIO

CITY OF
Thunder Bay
Superior by Nature

***Interested in sponsoring Magnus Theatre?
Contact our Executive Director
at executivedirector@magnustheatre.com***



Magnus Theatre is thrilled to announce The Next Stage project!

Magnus Theatre has thrived in its first 50 years as Northwestern Ontario's only professional theatre. Demand is growing exponentially for both programming and facility rentals, but upgrades are vital to extending possibilities within the community. The Next Stage is a major infrastructure project launched to restore, upgrade, and expand this unique facility to meet emerging needs of the community and to maximize Magnus Theatre's impact as a cultural and economic force.

The project will see the addition of a 125-seat Studio Theatre, expansion of the Production Shop, renovations to the Lounge, and building improvements and retrofit, all while maintaining the Heritage features of the Central School building.

The Next Stage project has been supported in part by the following sponsors and we cannot thank them enough for helping make this possible. This project is funded [in part] by the Government of Canada, proudly supported by FedNor, the Northern Ontario Heritage Fund Corporation, the Trillium Community Building Fund, the Trillium Resilient Communities Fund, the Thunder Bay CEDC, and TBXI.

Want to get involved in supporting Magnus Theatre's Next Stage? Reach out to executivedirector@magnustheatre.com or (807)-345-8033.

Magnus Theatre

Staff & Board



MANAGEMENT

Artistic Director – Thom Currie

Executive Director – Alexis Rowlinson

THEATRE IN EDUCATION

Theatre in Education Director – Jordan Blaxill

Theatre in Education Instructors – Jenn McCallion,
Shannon Vancook

FUNDRAISING & DEVELOPMENT

Director of Development - Mairéad O'Higgins-Human

MARKETING & PUBLICITY TEAM

Interim Marketing Director – Julie MacCoy

Publicity & Social Media Coordinator – Julie MacCoy

PRODUCTION TEAM

Production Manager – Nicholas Palinka

Technical Director – Tim Stephenson

Head Carpenter – David Brown

Head of Properties – Nadia Cheechoo

Head of Wardrobe – Lisa Macchione

Production Assistant - Tim Walters

Production Assistant - Autumn Leclair

ADMINISTRATIVE TEAM

Financial Officer – Shaveh Moores

Accounting Clerk - Harneet Kaur

Office Administrator - John Ostrowski

Box Office Representative – Sandra Snider

Front of House Manager/Volunteer Coordinator – Jerron Fuchihara

Bar and Concessions Attendant - Ashley Perry, Beck Salminen

BOARD OF DIRECTORS

President – Nadia La Russa

1st Vice President – Cathy Ridley

Past President – Warren Mouck

Treasurer – Meagan Ellis

Directors

Susan Aris

Gerald Buckrell

Elliott Cromarty

Tammy D 'Amours

Ernie Epp

Trish Glena

Eraj Rehman

Are you connected with us on Social Media?



@MagnusTheatre



@MagnusTheatre

www.magnustheatre.com

**Digital Edition of
The Chronicle-Journal**

Only \$13.95/mth
sign up at
chroniclejournal.com/digital

DIGITAL ePaper

