

A photograph of three women in a room with metal bars in the background. They are wearing heavy, dark brown fur coats. The woman on the left is holding a small brown animal skin. The woman in the center is holding a larger brown animal skin. The woman on the right is holding a white animal skin. They all have serious expressions.

<sup>W</sup>  
**Magnus**  
Theatre

**Women of the  
Fur Trade**

**By Frances Koncan**

**April 10 - 26, 2025**

Artistic Director  
Thom Currie

<sup>W</sup>  
**Magnus**  
Theatre

Executive Director  
Alexis Rowlinson

# Women of the Fur Trade

By Frances Koncan

## THE COMPANY

<b>CECILIA</b>	Jaimie Henderson
<b>EUGENIA</b>	Grace Lamarche
<b>MARIE-ANGELIQUE</b>	Lisa Nasson
<b>LOUIS RIEL</b>	Richard Comeau
<b>THOMAS SCOTT</b>	Andrew Hodwitz
<b>RICHARD COMEAU</b>	Director
<b>AMY SELLORS</b>	Director
<b>JOE PAGNAN</b>	Set Designer
<b>JEFF CHIEF</b>	Costume Designer
<b>ANIKA BINDING</b>	Lighting Designer
<b>GILLIAN JONES</b>	Stage Manager
<b>NICHOLAS PALINKA</b>	Production Manager
<b>TIM STEPHENSON</b>	Lead Technician
<b>LISA MACCHIONE</b>	Head of Wardrobe
<b>NADIA CHEECHOO</b>	Head of Props
<b>DAVID BROWN</b>	Head Carpenter

Women of the Fur Trade was created and first produced by Vault Projects, an interdisciplinary theatre collective based in Winnipeg, Manitoba, with financial support from the Winnipeg Arts Council and the Nellie McClung Foundation Arts Legacy Award. Lindsay Lachance at Playwrights Theatre Centre/ Indigenous Theatre, National Arts Centre, Brian Drader at the Manitoba Association of Playwrights, Krista Jackson at the Royal Manitoba Theatre Centre, and Jessica Carmichael at Animikiig Creators Unit with Native Earth provided dramaturgical support. Women of the Fur Trade received its regional premiere at the Royal Manitoba Theatre Centre (Winnipeg, MB) in 2020, produced in association with Indigenous Theatre, National Arts Centre (Ottawa, ON). The play received further development support from the Stratford Festival in preparation for its 2023 production.

The videotaping or other video or audio recording of this production is strictly prohibited. Approximate run time: 120 mins including  
**ONE 15 minute INTERMISSION**



At Tbaytel, we believe the arts enhance quality of life and are a key part of building more vibrant communities.

Supporting Magnus Theatre is our way of helping to make our neighbourhood a better place for everyone.

**We're in it together**

**tbaytel for good.**



**Frances Koncan** (Playwright) is a storyteller of mixed Anishinaabe and Slovene descent from Couchiching First Nation in Treaty 3 territory. They are currently based in Winnipeg, Manitoba in Treaty 1 territory where they work as a writer in any medium that will offer her a job – most often, this has been in theatre. They made their professional debut as a playwright in 2018, as a co-writer of *Torn Through Time* at Manitoba Theatre for Young People, and in 2020 as a solo playwright of *Women of the Fur Trade* at the Royal Manitoba Theatre Centre. They holds a B.A. in Psychology from the University of Manitoba and an M.F.A in Creative Writing from the City University of New York Brooklyn College.



**Richard Comeau** (Director/Louis Riel) is an actor, fight director and a Certified Fight Instructor with Fight Directors Canada. And now, he can add a new title to his resume as this is his directorial debut. Richard is thrilled

to return to Magnus Theatre, having performed the roles of Cam/Quint in *Liars at a Funeral* last year. He is incredibly honoured to have the opportunity to play one of his heroes on the stage, and to be working with such an incredible cast, crew, design team and his Co-Director Amy is a dream. Other theatre credits include *1939* (Canadian Stage); *King Lear*, *Much Ado*, *1939*, *Hamlet-911* (Stratford Festival); *1939* (YES! Theatre); *Crazy Dave Goes to Town* (Centre for Indigenous Theatre); and will be spending the summer performing at the Blyth Festival. Film/TV credits include *Star Wars Battlefront II: Official Rivals* (Disney/Lucas Films); *Extraordinary Canadians: Louis Riel and Gabriel Dumont* (CBC/PMA Biographies). Fight Direction credits include Shaw Festival, Soulpepper, Canadian Stage, Native Earth, etc. This one's for you Dad. Miigwetch for being the best mentor, teacher, friend and father I could have ever hoped for!

# ONTARIO **POWER** GENERATION

*Electrifying life* in one generation!

Tracey Cambly

Let me help you  
deliver your message!

Senior Advertising Consultant  
807-629-7009

**99.9 THE BAY**

70's, 80's & 90's

**Country 105**  
THUNDER BAYS COUNTRY





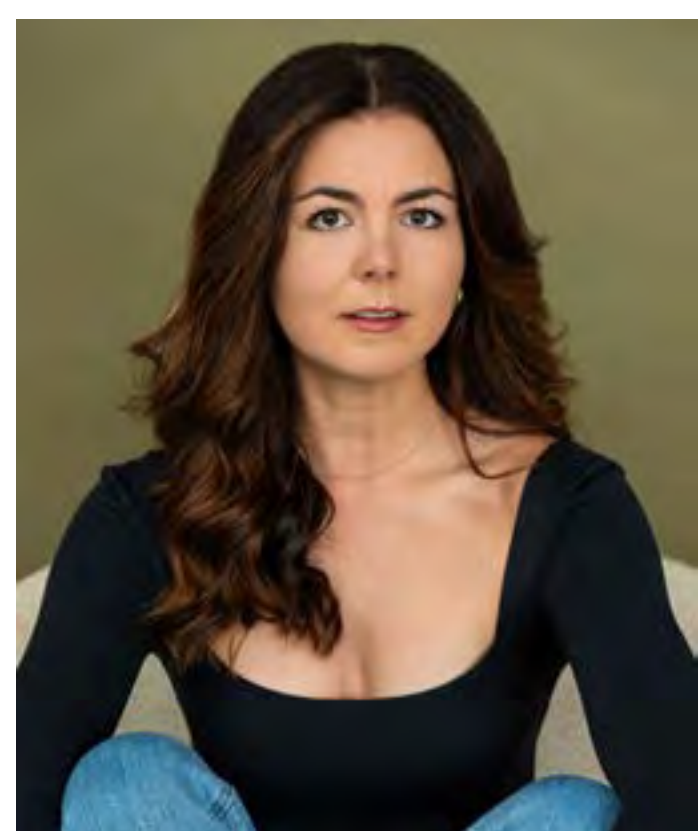
**Amy Sellors** (Director) Every opportunity to tell stories is important and rewarding, and so Amy is excited to collaborate with Richard Comeau in directing *Women of the Fur Trade*. Most recently Amy was the Associate

Director for Magnus Theatre's hit production of *Liar's at a Funeral*. While Amy is more often seen on the stage, she began her directing career over 10 years ago at the Showboat Festival Theatre in Port Colborne, ON, working with legendary Canadian Director/Choreographer Dy Nyland Proctor on *I'll Be Back Before Midnight* and *Old Love* as well as assistant directing *The Owl and The Pussycat*. She stepped into the director's chair at the Stephenville Theatre Festival in Newfoundland, directing the hit family show *Tales of Ti-Jean*, and the classic Canadian musical revue, *Blue Champagne*. Amy has performed on stages across Canada for over 25 years, and so Magnus audiences will remember her as the wisecracking mom 'Emily' in *Elf - The Musical*, the grieving and somewhat unhinged mom 'Margery' in *Hand to God*, 'Aldonza/Dulcinea' in *Man of LaMancha*, 'Linda' in *Smarty Pants*, and 'Patsy Cline' in *A Closer Walk with Patsy Cline*. Amy is grateful to have the opportunity to work on this show with this amazing team.



**Grace Lamarche** (Eugenia) is an actor and theatre artist of mixed Cree/Eastern European decent based in Toronto. She is so excited to be making her Magnus Theatre debut. Other theatre credits include: *1939* (Canadian Stage), *1939* (The Belfry), *Weltamultiek* (Paprika Festival), *Skyscraper* (Paprika Festival), *Birth* (Toronto Fringe), *Blood Wedding*, *Cymbeline*, *Per Gynt and Engaged* (George Brown Theatre School).

Grace is a graduate of George Brown Theatre School and the Paprika Festival's Director's Lab. When not on stage, Grace works as the Development Coordinator for Hamilton Festival Theatre Company.



**Jaimie Henderson** (Cecilia) is thrilled to return to the stage after recently earning her MFA in Acting from Ohio University. A dynamic and versatile performer, she has embodied a wide range of characters, including Cassius in *Julius Caesar*, Maria in *Twelfth Night*, Nina in *The Seagull*, and Somebody in *Everybody*. Her passion for storytelling spans both classical and contemporary theatre, with work in both Canada and the U.S. Beyond acting, Jaimie is deeply invested in the intersection of mental health and performance. She specializes in actor well-being, with a particular focus on mental health awareness, emotional resilience, and injury prevention for performers. With extensive training in movement, stage combat, and voice, she is dedicated to exploring sustainable artistic practices that promote longevity in an actor's career. She sends endless gratitude to her dear circle of loved ones, whose unwavering support and encouragement inspire her every day!



**Lisa Nasson** (Marie-Angelique) Selected Theatre: *Women of The Fur Trade* (National Arts Centre/Native Earth Performing Arts); *Dear Rita*, *Billy Elliot The Musical*, *Pawakan Macbeth* (Neptune Theatre); *Pawakan Macbeth* (Akpik Theatre); *Richard III*, *All's Well That Ends Well*, *R+J*, *Two Gentlemen of Verona* (Stratford Festival). Director: *Otiwew* (Crossroads Theatre); *Moose and Hawk* (Neptune Theatre, Roseneath Theatre). Training: George Brown College, Stratford Festival's Birmingham

Conservatory. Film/TV: *Little Bird* (Toronto International Film Festival). Awards: Michael Mawson Award, Stratford Festival Tyrone Guthries.



**Andrew Hodwitz** (Thomas Scott) was last seen at Magnus Theatre singing and jiving in *Back in 59*. Select Theatre Credits include *The Sound of Music* (Grand Theatre); *The 39 Steps* (St. Lawrence Shakespeare Festival); *Back in 59* (Thousand Islands Playhouse); *A Midsummer Night's Dream* (Driftwood Theatre); *Fiddler on the Roof* (Stage West). Andrew will be appearing in *Buddy: The Buddy Holly Story* and a series of concerts with The Grove Theatre in the summer of 2025. All love and gratitude to my darling B, the irrepressible and unsinkable. Instagram: @andrewhodwitz Website: andrewhodwitz.com

<sup>W</sup>**Magnus**  
Theatre  
in Education

**THE ACTOR'S STUDIO PRESENTS**

# **ANTIGONE**

**BY SOPHOCLES**

**FEATURING:**

**ALICIA BOBROWSKI, MAGGIE MACLEAN DAWSON,  
DERIAN MISHKIMINS, CLARE HUPF, JAMES PEAKE,  
LISA TRIBE, MEAGHAN ELEY**

**FRIDAY, JUNE 20, 2025 | 7:30PM**

**TICKETS ON SALE NOW:**

**MAGNUSTHEATRE.COM | 807.345.5552**



# 91-5 ckpr

THUNDER BAY'S RADIO STATION



CKPR.COM

# Signature

FINANCIAL

Manage your business. Let us do the rest.

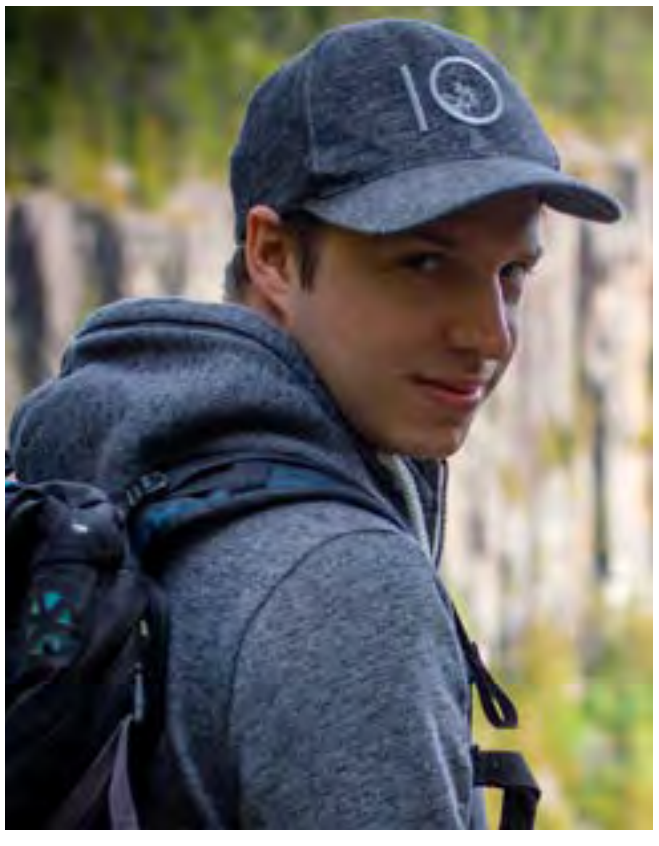
[signaturefinancial.ca](https://signaturefinancial.ca)

# Consumers

FINANCIAL SERVICES

Building life long relationships by putting our  
client's needs first.

[consumersfinancialservices.ca](https://consumersfinancialservices.ca)



**Joe Pagnan** (Set Designer) is an award winning, multi-hyphenated artist joining from the Thousand Islands. Their work is concerned with environmentalism, queerness and education. Working mostly in design and direction, they are a professor of scenography at Queen's University. A board member of the Arts Council of Kingston, committee member of the ADC Green Alliance, and member of the planning committee for the 2027 Canadian Exhibition for the Prague Quadrennial! A lover of nature, boardgames, ttrpgs, and telling a good story, Joe launched Living Edge, a theatre company daring the point between here and there. He most recently created and directed (Saint) Joan, a new edition of the George Bernard Shaw play starring seven of Canada's top intersectional artists. Past Magnus credits include: *The Jungle Book*, *A Christmas Carol*, *We Will Rock You, Shout!*, *Jacob Marley's A Christmas Carol*, and *Tell Me on a Sunday*. Past notable works include: *Once and Mary's Wedding* (Thousand Islands Playhouse), *She's Not Special* (Tarragon Theatre), *What She Burned* (New Zealand with Talk is Free Theatre). Upcoming projects to look forward to: *9 to 5* and *Stag and Doe* (Thousand Islands Playhouse), the Eastern Canadian premier of *Hairspray* (Highland Arts Theater), and *SPOILERS*. Can't give it all away. Check out [livingedge.ca](http://livingedge.ca) for more. Thank you to the incredible team at Magnus, it feels great to be back. As always, my unyielding love to Jeff and my coyote Aspen.



**Jeff Chief** (Costume Designer) is Cree from Onion Lake First Nation on Treaty 6 territory in Saskatchewan and currently lives in Saskatoon. Jeff's recent design credits include *Awowakii* (Theatre Calgary), *Leave it to Weavers* (GTNT), *Women of the Fur Trade*, *Café Daughter*,

*Sir John A: Acts of a Gentrified Ojibway Rebellion* (Globe Theatre), *The Diviners*, *Women of the Fur Trade* (Stratford Festival), *King Lear* (GTNT/La Troupe du Jour), *Gaslight* (Vertigo Theatre), *The Fiancée* (Persephone Theatre), *Iago Speaks* (Shakespeare on the Saskatchewan), *The Rez Sisters* (Royal MTC), *Flush*, *Life After Hockey* (La Troupe du Jour), *Yaga*, *Ministry of Grace* (Belfry Theatre), *Kronborg: The Hamlet Rock Musical* (Confederation Centre of the Arts), *Honour Beat* (Theatre Calgary), *Hedda Noir* (Theatre North West), *Le Wild West Show de Gabriel Dumont* (National Arts Centre), *Ipperwash* (Blyth Festival).



**Anika Binding** (Lighting Designer) is a multidisciplinary theatre artist born and raised in Winnipeg. She graduated from the University of Winnipeg's Honours Theatre program and now works as a Lighting and Costume

Designer, and stage manager. She has previously designed costumes at Magnus for *Liars at a Funeral*. Selected additional credits include: lighting design for *Prophecy* (TPM), stage management for *The Rachel Browne Tribute Show* (WSCD), lights and costumes for *Miss Shakespeare* (WST), assistant set design for *Murder for Two* (RMTC), and assistant lighting design for *Little Women* (RMTC), *The Recipe* (RMTC & TPM) and *Among Men* (RMTC & TPM). Anika would like to thank her family, friends, and mentors for their endless support.

ALL THE  
**DAZE**  
Productions

# Seussical JR.

Book by Lynn Ahrens and Stephen Flaherty

Music by Stephen Flaherty.  
Lyrics by Lynn Ahrens

Conceived by Lynn Ahrens, Stephen Flaherty and Eric Idle

Based on the works of Dr. Seuss

Music Supervised, Adapted & Produced by Bryan Louiselle

DIRECTED BY: MARCIA ARPIN

MAY 30 & 31, 2025.

MAGNUS THEATRE

Tickets at  
[magnustheatre.com](http://magnustheatre.com)



WHITE  
MACGILLIVRAY  
LESTER

neighbourly

All the DAZE Productions offers another Broadway musical theatre classic perfect for the entire family.

Horton the Elephant, the Cat in the Hat and all of your favorite Dr. Seuss characters spring to life onstage in Seussical JR., a fantastical musical extravaganza from Tony-winners, Lynn Ahrens and Stephen Flaherty.

Transporting audiences from the Jungle of Nool to the Circus McGurkus, the Cat in the Hat narrates the story of Horton the Elephant, who discovers a speck of dust containing tiny people called the Whos. Horton must protect the Whos from a world of naysayers and dangers, and he must also guard an abandoned egg that's been left in his care by the irresponsible Mayzie La Bird. Although Horton faces ridicule, danger and a trial, the intrepid Gertrude McFuzz never loses faith in him. Ultimately, the powers of friendship, loyalty, family and community are challenged and emerge triumphant!

\*For accessible seating please call the box office at (807) 345-5552.

<sup>W</sup>  
**Magnus**  
Theatre  
in Education

MAGNUS THEATRE'S YOUNG COMPANY

PRESENTS

# *the* **resistible** *rise of* **arturo Ui**

BY BERTOLT BRECHT

TRANSLATED BY STEPHEN SHARKEY



May 23 and 24 | 7:30PM | Magnus Theatre Mainstage

For tickets: [magnustheatre.com](http://magnustheatre.com) | 807.345.5552



**Gillian Jones** (Stage Manager)

This is my bio all about how, my life got flipped turned upside down and I'd like to take a moment before the show starts

to tell you how I became involved in the live arts. In North Thunder Bay, I was born and raised. On a playground is where I spent most of my days. Chillin out max and relaxin all cool, but never shootin' B-ball outside of the school. When a couple of folks who were up to some good, started a rehearsal in my neighbourhood. I worked on one little show and my boss was eager to offer me a job here at Magnus Theatre.



**Nicholas Palinka** (Production Manager)

is excited to be celebrating his ninth season at Magnus Theatre. He would like to thank Dave, Nadia, Lisa and Tim for your hard work throughout the season. Nadine, thank

you for your support - without you I wouldn't have been able to have a career in the arts. If you've read this far, thanks and enjoy the show!



**Tim Stephenson** (Lead Technician)

is a production award winning graduate from the Ontario Institute of Audio Recording Technology. In the years since graduation he has worked as an Audio Technician at the Thunder

Bay Community Auditorium setting up some of the biggest shows to come to Thunder Bay.



**Lisa Macchione** (Head of Wardrobe)

is a passionate devotee of the performing arts and all things adornment. In 1999 she graduated from Seneca College's Fashion Arts program and has had the opportunity

to use her skills in costuming to work onset of

local films, historical reenactments, as well as her own performance art. Researching characters, creating one of kind pieces, and the spark of a thrift store treasure hunt are what she enjoys most. She is thrilled to join the team of creative crew and cast at Magnus Theatre.



**Nadia Cheechoo** (Head of Properties/ Running Crew) is an Indigenous woman from Wikwemikong, Ontario. She is back at Magnus Theatre, adding yet another position to her repertoire. She has had previous props experience working in film, but this is her first time in this position at Magnus. With carpentry and wardrobe already under her belt, she's ready to continue honing old and new skills. Then she plans to carry those skills into future shows, theatres, and film projects. Magnus Theatre has been a major stepping stone in her career as an artist, and she hopes to continue to share her skills with them and others.



**David A. Brown** (Head Carpenter) joined Magnus six seasons ago as the head carpenter after working as the canoe builder /shipwright at Old Fort William for 40 years. Canoe and boat building were his main jobs but Dave wore many hats while at the Fort and has been involved in many movie and television productions. From an "I-Max" production in the early 1980's to many commercials and print productions. Appearing in National Geographic and the National Enquirer in the same year. He was heavily involved in "Haunted Fort" building many props, animatronic effects and enjoys lighting things up as a "licensed pyrotechnician." Dave enjoys the new challenges at Magnus and is getting used to building square and level, he would still like everything to be curved like a canoe or boat.



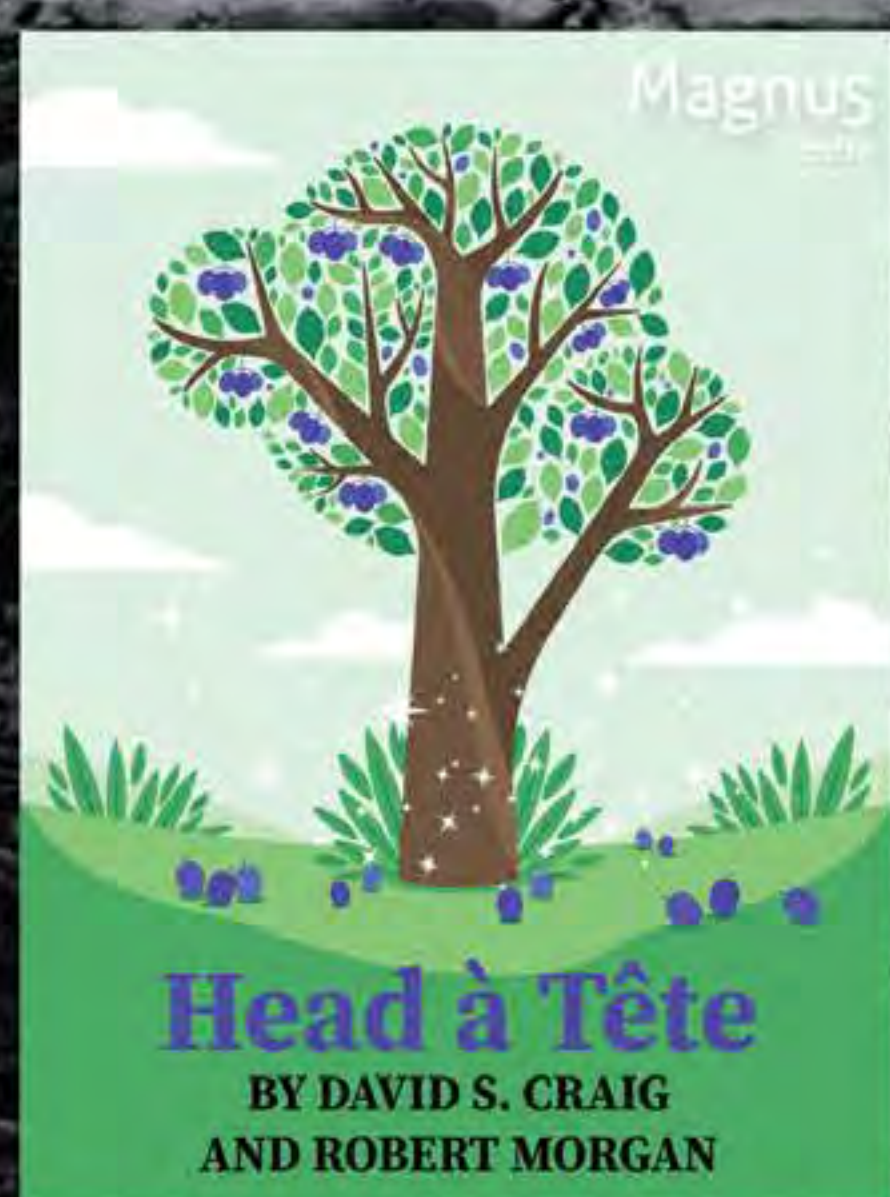
Fort William  
Historical Park

# Bringing *life* to history

[fwhp.ca](http://fwhp.ca)



# Theatre for Young Audiences 2025 School Tour



Featuring:



Jack Kotanen



Emma Vickers



Ryan Horton

**THURSDAY May 8TH**

**10:00am - HEAD A TETE | Ages 4-9**

**1:00 pm LAND OF TRASH | Ages 10 +**

**FRIDAY May 9TH**

**10:00am - LAND OF TRASH | Ages 10 +**

**1:00 pm - HEAD A TETE | Ages 4-9**

**Magnus Theatre | Tickets - \$10**

**BUY TICKETS: [magnustheatre.com](http://magnustheatre.com) | 807.345.5552**

**Magnus**  
Theatre  
in Education

## The 10x10 Short Play Festival

**AUDITIONS ARE NOW OPEN!**

**April 19 & 20th**

**10am - 2pm**

**Book online at**

**[magnustheatre.com/10x10/](http://magnustheatre.com/10x10/)**

**Play showcase dates:**

**June 6 and 7, 2025**

**Magnus Theatre is the only professional theatre company between Winnipeg and Barrie, Ontario.**



Artists engaged in Magnus Theatre productions are members of Canadian Actors' Equity Association, a national association representing artists working in theatre, opera and dance from coast-to-coast-to-coast. Equity's membership includes performers, directors, choreographers, fight directors and stage managers.



Magnus Theatre is a proud member of the Professional Association of Canadian Theatres. PACT is a member-driven organization of professional Canadian theatres which serves as the collective voice of its members for the betterment of Canadian professional theatre.



Associated Designers of Canada is a national, professional non-profit arts service organization dedicated to representing the interests of set, costume, lighting, projection and sound designers working in the live performing arts in Canada.



SOCAN is a performing rights society that licenses the public performance and communication of the world's repertoire of copyright-protected musical works in Canada and then distributes royalties to its members and affiliated international societies.



Magnus Theatre engages stagehands and craftspeople who are members of the International Alliance of Theatrical Stage Employees, Moving Picture Technicians, Artists and Allied Crafts of the United States, Its Territories and Canada (IATSE), Local 467.

**Magnus**  
Theatre

**Are you connected with us on Social Media?**



**@MagnusTheatre**



**@MagnusTheatre**

**[www.magnustheatre.com](http://www.magnustheatre.com)**

# Annual Fund Donations

April 7, 2024 - April 7, 2025

## Major Benefactors between 2000.00 and 1000000.00

Jacqueline and Maurice Black  
Larry Jones  
Kim Koivukoski  
Nadia Kukkee

## Benefactors between 500.00 and 1999.99

Evelyn and Bruce Creed  
Susan Southcott and Jean Robillard  
Rosalie and Ken Evans  
Philip Jarvis  
Bruce and Eda Leaman  
Nancy and Glen Rowlinson  
Jim and Sherley-Ann Smith

## Patrons between 200.00 and 499.99

Alan Moon Pottery  
Brooke Carfagnini  
Shelby Ch'Ng  
Glenn Coulson  
Georgina & William Daniels  
Meagan Ellis  
Ernie and Trudy Epp  
Allison Hill  
Margaret Wanlin & Bruce Hyer  
Richard and Joan Johns  
Sylvia Kayzer  
Gary and Christina Lofts  
Ed and Beth Long  
Jan Pilley  
Ken Whitney and Marilyn Whitney

## Supporters between 100.00 and 199.99

Sean Albanese  
Joyce Baxter  
Gerald Buckrell  
Paula Ede  
Jeannette and Richard Eras  
Cindy Figus  
Trish Glena  
Sharon Godwin  
Angie Maltese & Philippe Hamel

Mary Ann Mountain  
Peter J. Neelands  
Arnie Nurmi  
Dennis and Susan Siczkar  
Deirdre Spain  
Laura Spiller

## Associates between 0.01 and 99.99

Paddy  
Diane Borejsza  
Ina Chomyshyn  
Deanna Craig  
Ellen Cramm  
Joyce Fossum  
Jerron Fuchihara  
Peter Globensky and Bev Sabourin  
Debra Gold  
Justus Grunow  
Derek Scott Hobbs  
Cathy Jillings  
Trudi Jones  
Roberta Kastern  
Denise Lorraine Krawczuk  
Judy Lesschaeve  
Richard and Mary Jane Lewandowski  
Julie MacCoy  
Leslie Maggrah  
Jason Napper  
Norma A. Otway  
Marion Petersen  
Port Arthur Rotary Club  
Portingas  
Paula and Greg Ribotto  
Cathy Ridley  
Carlos Santander-Maturana  
Melissa Rae Sdao  
Elizabeth Shea  
Patti Snowden  
Janet Wright

## Capitol Campaign/The Next Stage

Helen and Greg Alexander  
Allstate  
Kirsten Chlebovec  
John Raymond Condon  
Allison Elizabeth Hill  
Stephen and Noel Jones

Debbie and Steve McAuley  
Fan Payant and Chris Higgins  
Cathy Ridley  
Sleeping Giant Brewery  
Sandra Snider

## **Theatre in Education**

Pamela Cain  
Marion Biloski  
Shawna Bobrowski  
Louis and Yvette Bondy  
Danielle Chandler  
Bryan and Anne MacLeod

## **In Memoriam**

### **In Memory of Elizabeth Ann (Betty Ane) Shuttleworth**

Kal Pristanski

### **In memory of Carla LaBelle**

Sharon McKinnon

### **In Memory of Alycia Novak**

10 Talent Management  
Minna and Peter Novak  
Steve Wright  
Cheryl Delorenzi  
Rita Briska  
Sari Edwards  
Katherine Delorenzi  
Ruth Wright  
Beth Wilson-Krawec  
Cathy, Bob and the Johnson  
Family  
Fenulla Jiwani  
Sandra Legarrie  
Robert Schulman  
Diane Imrie  
Kate Dwyer  
Meeri Makinen  
Fil Ingram

Marilyn Martens  
Leanne Calsavara  
Mary Marrion  
Lesli Schelling  
Kathy Gibson  
Faye Peterson House  
Susan Nistico  
Janice MacDonald  
Diane Burella  
Delores Burella  
Lillian and Laurie Comeau  
Santina Giardino

### **In Memory of Shirley Robson**

Susan Prince  
Rosanna and Livio Dimatteo  
Bill Grant  
Diane Skinner  
Herbert Kraus  
Barry and Erlinda Lahteenmaa  
Carol A. Ledoux  
Alana Rechlin  
Donna Vantaa  
Thunder Bay Police Youth Corps  
Diane van Wagoner  
Marguerite and Dave Morellato  
Gerry Bondy

### **In Memory of Burton Lancaster**

Rebecca Lancaster

## **The Benefits of Sponsorship**

Magnus Theatre's sponsorship benefits package is extensive and includes acknowledgement in publicity material, advertising space in show programs and tickets.

If you would like to find out more about sponsorships, please email  
Glenn Coulson, Director of Development at  
[glenn.coulson@magnustheatre.com](mailto:glenn.coulson@magnustheatre.com)

# Saluting Our Sponsors

## Season Sponsors



## Show Sponsors



## Community Partners

**Ken Boshcoff  
Community Trust**



## Pay What You Want Performance Sponsor



## Theatre in Education Sponsor



# Funding Support

# Canada



Canada Council  
for the Arts

Conseil des arts  
du Canada



ONTARIO ARTS COUNCIL  
CONSEIL DES ARTS DE L'ONTARIO

an Ontario government agency  
un organisme du gouvernement de l'Ontario

Ontario 

Ontario  
Trillium  
Foundation



Fondation  
Trillium  
de l'Ontario

An agency of the Government of Ontario  
Un organisme du gouvernement de l'Ontario



***Interested in sponsoring Magnus Theatre?  
Contact our Director of Development, Glenn Coulson  
at [glenn.coulson@magnustheatre.com](mailto:glenn.coulson@magnustheatre.com)***



Magnus Theatre is thrilled to announce The Next Stage project!

Magnus Theatre has thrived in its first 50 years as Northwestern Ontario's only professional theatre. Demand is growing exponentially for both programming and facility rentals, but upgrades are vital to extending possibilities within the community. The Next Stage is a major infrastructure project launched to restore, upgrade, and expand this unique facility to meet emerging needs of the community and to maximize Magnus Theatre's impact as a cultural and economic force.

The project will see the addition of a 125-seat Studio Theatre, expansion of the Production Shop, renovations to the Lounge, and building improvements and retrofit, all while maintaining the Heritage features of the Central School building.

The Next Stage project has been supported in part by the following sponsors and we cannot thank them enough for helping make this possible. This project is funded [in part] by the Government of Canada, proudly supported by FedNor, the Northern Ontario Heritage Fund Corporation, the Trillium Community Building Fund, the Trillium Resilient Communities Fund, the Thunder Bay CEDC, and TBXI.

Want to get involved in supporting Magnus Theatre's Next Stage? Reach out to Glenn, our Director of Development at [development@magnustheatre.com](mailto:development@magnustheatre.com) or (807)-345-8033.

# Magnus Theatre

## Staff & Board



### **MANAGEMENT**

Artistic Director – Thom Currie  
Executive Director – Alexis Rowlinson

### **THEATRE IN EDUCATION**

Theatre in Education Director – Jordan Blaxill  
Theatre in Education Instructor – Jenn McCallion, Hailey Hull  
Theatre in Education Intern - Katie Dunkle

### **MARKETING & PUBLICITY TEAM**

Interim Marketing Director – Julie MacCoy  
Publicity & Social Media Coordinator – Julie MacCoy

### **FUNDRAISING & DEVELOPMENT**

Director of Development - Glenn Coulson

### **PRODUCTION TEAM**

Production Manager – Nicholas Palinka  
Lead Technician – Tim Stephenson  
Head Carpenter – David Brown  
Head of Properties – Nadia Cheechoo  
Head of Wardrobe – Lisa Macchione

### **ADMINISTRATIVE TEAM**

Financial Officer – Shaveh Moores  
Accounting Clerk - Harneet Kaur  
Box Office/Office Administrator - Jessica Krasnichuk  
Box Office Representatives – Sandra Snider, Madison Steadwell  
Patrons Services Manager – Kait Blake  
Front of House Assistants - Martina Vaillant, Shaya Meilleur, Kaitlyn Harris  
Bar and Concessions Manager - Jodi Mason  
Facilities Caretaker - Alex Campbell-Belandiuk

### **BOARD OF DIRECTORS**

President – Nadia La Russa  
Vice President – Cathy Ridley  
Second Vice President - Scott Hobbs  
Treasurer – Meagan Ellis  
Secretary - Neil McCartney

### **DIRECTORS**

Greg Alexander  
Susan Aris  
Elliott Cromarty  
Tammy D 'Amours  
Ernie Epp  
Trish Glena  
Rob Magnusson



**99.9 THE BAY**

70's, 80's & 90's

*Thunder Bay's*  
**FAVOURITE  
MORNING SHOW**

**WEEKDAYS**

**6:00 AM - 10:00 AM**



**mornings** in the bay  
*with Danny Foresta*