

Digital Program

  
Magnus  
Theatre

# LIES & LEGENDS

THE MUSICAL STORIES  
OF HARRY CHAPIN

JULY 17-AUGUST 2

MAGNUS THEATRE  
OUTDOOR STAGE



Artistic Director  
Thom Currie

# Magnus Theatre

Executive Director  
Alexis Rowlinson



Musical Arrangements by  
STEPHEN CHAPIN and TOM CHAPIN  
Original Creative Consultant SANDY C. CHAPIN  
Original Concept by JOSEPH STERN

## FEATURING

SHARON DE LEON  
JEAN-PAUL DE ROOVER  
DANNY JOHNSON  
KATHERINE NEMEC  
ADAM HOULE

Directed by Thom Currie  
Musical Director Danny Johnson

Production Design	Warden Bémont
Stage Manager	Gillian Jones
Production Manager	Nicholas Palinka
Lead Technician	Tim Stephenson
Head of Wardrobe	Lisa Macchione
Head of Props/Paint	Nadia Cheechoo
Head Carpenter	David Brown

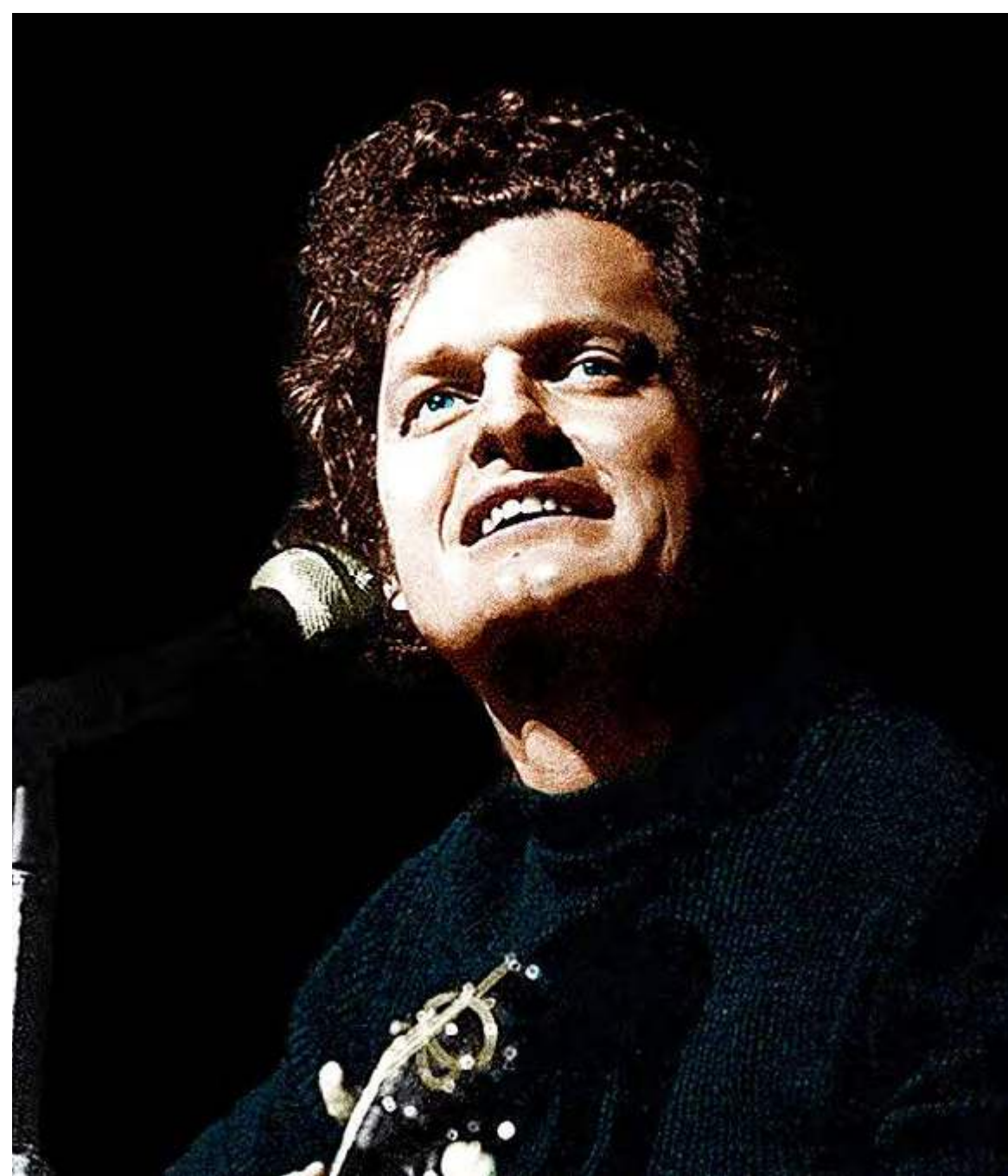
LIES & LEGENDS - THE MUSICAL STORIES OF HARRY CHAPIN  
is presented by arrangement with Concord Theatricals  
[www.concordtheatricals.com](http://www.concordtheatricals.com)

Originally produced for the New York Stage by Ken Kragen and Lewis Friedman with Albert Nicciolino, Ken Yates, Stuart Oken and Jason Brett. Musical numbers for the original production staged by Tracy Friedman. Original production directed by Sam Weisman.

The videotaping or other video or audio recording of this production is strictly prohibited. Approximate run time: 100 mins including  
ONE 15 minute INTERMISSION



# ABOUT THE SHOW



**HARRY CHAPIN** (Music & Lyrics) When Harry Chapin performed his songs, he created the very essence of theatre: he told stories that bound his audience into a community of shared emotion. It's a trip into Harry's off-kilter world with its population of ordinary people

- taxi drivers, dry cleaners, parents and children - people with a single thing in common: their ability to reach, however imperfectly, for their dreams.

Harry Chapin was a rare individual. When he died in a car accident in 1981, he left a legacy of music and social activism. Chapin was a storyteller, a troubadour, and a maker of moral fables, blessed with a painter's eye for crucial detail and an instinct for core emotion. In addition his career as a recording artist and concert performer, he also wrote three stage musicals. *Cotton Patch Gospel* was a huge success, and continues to be produced across North America. *The Night That Made America Famous* ran on Broadway in 1975, starring Chapin himself, garnering two Tony nominations. His unfinished final album, *The Last Protest Singer*, was envisioned as a future dramatic presentation.

Harry Chapin was a tireless worker for humanitarian causes, especially those associated with world hunger. He sat on the Presidential Commission on World Hunger and half of his performances were benefits. He was posthumously awarded the 1982 Special Achievement Award of the World Hunger Media Awards.

<https://harrychapinmusic.com/>

**FOR THE COMFORT OF  
THE ARTISTS AND AUDIENCE,  
DONT FORGET TO  
SILENCE YOUR PHONE**





At Tbaytel, we believe the arts enhance quality of life and are a key part of building more vibrant communities.

Supporting Magnus Theatre is our way of helping to make our neighbourhood a better place for everyone.

**We're in it together**

**tbaytel for good.**



# THE CAST

In Alphabetical Order

## **SHARON DE LEON** (Guitar, Bass, Violin, Cello, Keys)

Sharon has spent the past 20 years teaching music and drama with the Lakehead Public school board giving thousands of students performance opportunities.

Sharon is a graduate from

Lakehead University's Music program and the University of Toronto's (OISE) Music and Drama Education program! Sharon is also passionate about singing, song writing and sharing music with her local community. If you haven't seen her conducting a concert, you may have caught we her singing with her friend Larry ([SnL](#) on Facebook), entertaining in a senior's home, performing at local events such as at the Urban Abby at the Dementia Cafe, or singing at a wedding, private party or a local bar! She is excited to make her Magnus Theatre debut this summer.



## **JEAN-PAUL DE ROOVER**

(Guitars, Bass, Keys) Jean-Paul is no stranger to the stage having studied music and performed as a child around the world before graduating from Lakehead University in 2009. A talented musician, songwriter, and producer

he has toured across North America and Europe, sharing stages with artists such as the Beach Boys, the Goo Goo Dolls, Said the Whale, Beardyman and more, showcasing his work at multiple international music festivals (including Canadian Music Fest and NXNE). His music and videos have been featured on CBC, MuchMusic, reviewed in Exclaim, Earshot! and The Georgia



Straight and charted on campus radio stations nationwide. De Roover's constantly evolving palate has seen him exploring his earnest acoustic singer-songwriter side on "*Love*" (2019) as well as his passion for emotionally and aurally heavy alternative and progressive rock on the follow-up album, "*Loss*" (2020). When he's not performing live or parenting, De Roover can be found in his studio, Blueprints, where he not only recorded his latest albums but also works with the music, film, and television industries as a producer, composer and engineer. Visit [jeanpaulderoover.com](http://jeanpaulderoover.com) and [blueprintsaudio.com](http://blueprintsaudio.com).

## DANNY JOHNSON

(Musical Director, Guitars, Bass, Accordion, Piano, Keys) Danny is no stranger to theatre audiences, having performed in over sixty productions across the country, including *Million Dollar Quartet* (Sam Phillips), *Ring Of Fire*



(Johnny Cash), *2 Pianos 4 Hands*, *Buddy: The Buddy Holly Story* (Norm Petty), and portraying Hank Williams in *Hank Williams: The Show He Never Gave*. Most recently, he musically directed *ELF-The Musical* for Magnus and *Guys and Dolls* for Applauze Productions. He is a well-respected singer/songwriter who has performed at venues and festivals and has opened for many acclaimed acts, including Bob Dylan, The Tragically Hip, Colin James, George Jones, Valdy and Johnny Cash. As a musician he has performed with such artists as Bo Diddley, The Temptations, Bob Newhart, Paul Shaffer, Hal Linden, Red Skelton, Bob Hope, Tom "Bones" Malone, Jack de Keyzer, Long John Baldry, Tony "Little Sun" Glover, Paul James and Vishwa Mohan Bhatt. Danny has worked as engineer/producer for dozens of acclaimed album and film projects at his facility, Danalog Studio. Enjoy the show!



Digital Edition of  
**The Chronicle-Journal**

**\$16<sup>95</sup>**  
*Only* /mth

sign up at  
[chroniclejournal.com/digital](http://chroniclejournal.com/digital)

**DIGITAL**

**ePaper**



**ONTARIO** **POWER**  
GENERATION

***Electrifying life*** in one generation!





**KATHERINE NEMEC** (she/her) (Guitar, Bass, Keys) Katherine is beyond excited to be back at Magnus Theatre and spending her summer in the tent! Most recently seen at Magnus in *ELF-The Musical*, she has also been involved in various local productions such as *A*

*Year With Frog and Toad* (Cambrian Players), *9 to 5: Judy Bernly* (TBSO x Badanai Theatre), *The Marvelous Wonderettes: Betty Jean* and *The Addams Family Musical: Wednesday Addams* (Badanai Theatre). A graduate of Lakehead University receiving an Honours Bachelor of Arts Degree in Music, Katherine finds any way she can to work on her craft - including releasing her very first EP last year titled *Glow* - available on all streaming platforms. Endless appreciation for her family and friends and their love and support. Visit Katherine on [Instagram](#), [Facebook](#) and at her [Website](#).

**ADAM HOULE** (Drums, Percussion) Following his Magnus Theatre debut in *ELF-The Musical*, Adam returns to the Magnus in *Lies & Legends: The Musical Stories of Harry Chapin*. Adam's musical journey began in his hometown of Thunder Bay and led him to Toronto, where he earned his Bachelor of Music from Humber College. As a performer, Adam has worked across a wide spectrum of genres, including jazz, rock, Latin, blues, pop, and funk. This versatility has taken him from intimate venues to musical theatre pits, recording studios and even the circus - each experience shaping his adaptable and expressive style. Whether navigating the groove of funk, the complexity of jazz, or the high energy of rock and pop, Adam brings a deep respect for the craft to every performance.





Not only a singer, songwriter, and musician, Harry Chapin is equally well-known for his humanitarian efforts supporting food-security and hunger relief. He cofounded World Hunger Year (now WhyHunger) in 1975, and advocated at all levels of government to fight world hunger. Posthumously, he received a Congressional Gold Medal in recognition of his efforts and was a key inspiration for the Live Aid Concert.

In honour of Harry Chapin's humanitarian work, Magnus Theatre is partnering with the Regional Food Distribution Association to accept donations towards their mission to ensure that no one goes hungry.

If you enjoyed this performance, please consider making a donation to the RFDA at  
<https://www.canadahelps.org/en/dn/93825>

## Let No One Go Hungry

rfda  
REGIONAL  
FOOD  
DISTRIBUTION  
ASSOCIATION

# YOU BE THE CHANGE



**“EVERY DONATION YOU MAKE HELPS RFDA  
FEED THOUSANDS IN OUR COMMUNITY”**



SCAN ME

Cash / Cheque

For more information visit  
[www.foodbanksnorthwest.ca](http://www.foodbanksnorthwest.ca)  
Contact - (807) 622-7440

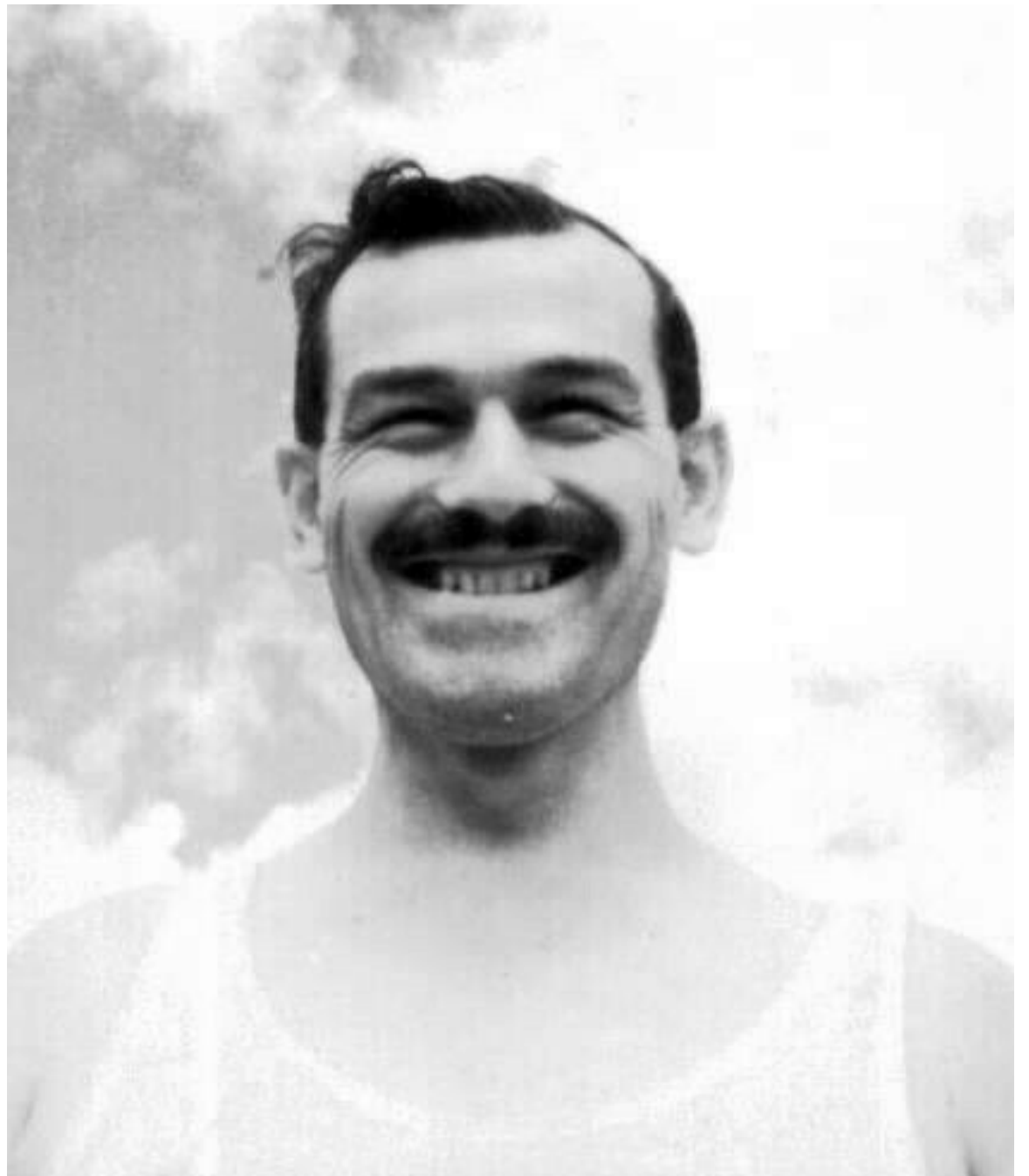




**THOM CURRIE** (Director)  
Thom is a director, playwright, dramaturg, actor and producer who has worked in theatres across Canada and Europe and is currently Artistic Director of Magnus Theatre in Thunder Bay. Prior to Magnus, Thom was Artistic Director of the Stephenville

Theatre Festival (NL), Managing Artistic Director at The Showboat Festival Theatre In The Round (ON), Artistic Director of The Georgian Theatre Festival (ON) and Founding Artistic Director of ReallyLittleTheatre (INTL). Thom has directed over 100 productions in his career, in spaces ranging from arenas in Regina to third floor walk-up apartments in Paris.

**WARDEN BÉMONT** (Production Design)  
Ward has been designing sets, costumes, and lights in theatres across Canada since 1991. In addition to multiple designs for Magnus (including *The Rocky Horror Show*, *Only Drunks & Children Tell The Truth*), some of Ward's favourite designs include production design on *Peter Pan* (Georgian Theatre), set designs for *A Closer Walk With Patsy Cline* and *Blue Champagne* (Stephenville Theatre Festival), *Last of the Red Hot Lovers* and *Back In 59*, (Showboat Festival). Warden lives in Owen Sound and does his best to speak only in French at home. He is happy to work with Thom and feels they have come a long way since *Kleines verlorenes Kaninchen* and *El espantapájaros sentimental*.





# 91-5 ckpr

THUNDER BAY'S RADIO STATION



CKPR.COM





**GILLIAN JONES** (Stage Manager) This is my bio all about how, my life got flipped turned upside down and I'd like to take a moment before the show starts to tell you how I became involved in the live arts. In North Thunder Bay, I was born and raised. On a playground is where I spent most of my days. Chillin out max and relaxin all cool, but never shootin' B-ball outside of the school. When a couple of folks who were up to some good, started a rehearsal in my neighbourhood. I worked on one little show and my boss was eager to offer me a job here at Magnus Theatre.

**NICHOLAS PALINKA** (Production Manager) is excited to be celebrating his ninth season at Magnus Theatre. He would like to thank Dave, Nadia, Lisa and Tim for your hard work throughout the season. Nadine, thank you for your support - without you I wouldn't have been able to have a career in the arts. If you've read this far, thanks and enjoy the show!



**TIM STEPHENSON** (Lead Technician) is a production award winning graduate from the Ontario Institute of Audio Recording Technology. In the years since graduation, he has worked as an Audio Technician at the Thunder Bay Community Auditorium setting up some of the biggest shows to come to Thunder Bay.



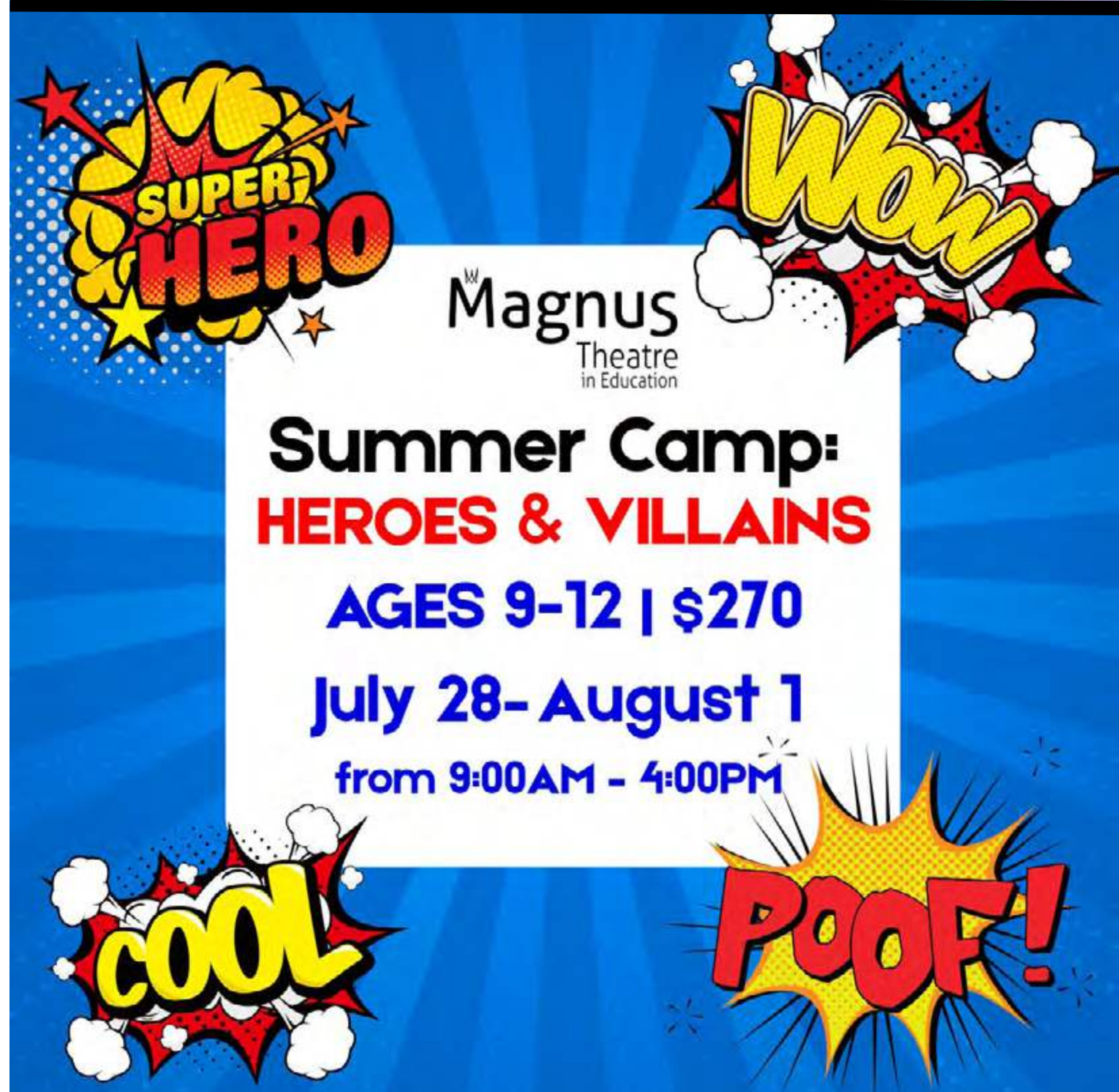
# Magnus Theatre Summer Camps!

Magnus Theatre is home to one of Thunder Bay's most popular and creative summer day camps!

Every week over the course of the summer, young thespians enjoy a camp experience highlighting creativity, fun, and adventure, focusing on theatre activities tailored to their age group.

All day camps are designed and themed to specific age groups, so that campers spend their camps days with peers, supervised by Magnus' professional education staff.

For more information about the Magnus Summer Camps, call the Magnus Theatre Box Office at 807-345-5552, or visit [magnustheatre.com/theatre-classes/](http://magnustheatre.com/theatre-classes/)





**LISA MACCHIONE** (Head of Wardrobe) is a passionate devotee of the performing arts and all things adornment. In 1999 she graduated from Seneca College's Fashion Arts program and has had the opportunity to use her skills in costuming to work on set of local films, historical reenactments, as well as her own performance art. Researching characters, creating one of kind pieces, and the spark of a thrift store treasure hunt are what she enjoys most. She is thrilled to be a part of the team at Magnus Theatre.



**NADIA CHEECHOO** (Head of Properties/Set Painting) is an Indigenous woman from Wikwemikong, Ontario. She is back at Magnus Theatre, adding yet another position to her repertoire. She has had previous props experience working in film, but this is her first time in this position at Magnus. With carpentry and wardrobe already under her belt, she's ready to continue honing old and new skills. Then she plans to carry those skills into future shows, theatres, and film projects. Magnus Theatre has been a major stepping stone in her career as an artist, and she hopes to continue to share her skills with them and others.

**DAVID A. BROWN** (Head Carpenter) joined Magnus in 2019 as the Head Carpenter after working as the canoe builder/shipwright at Old Fort William for 40 years. Canoe and boat building were his main jobs but Dave wore many hats while at the Fort and has been involved in many movie





and television productions, from an IMAX production in the early 1980's to many commercials and print productions, appearing in National Geographic and the National Enquirer in the same year. He was heavily involved in "The Haunted Fort" building many props, animatronic effects and lighting things up as a licensed pyrotechnician. Dave enjoys the new challenges at Magnus and is getting used to building square and level; he would still like everything to be curved like a canoe or boat.



**TIMOTHY WALTERS** (Production Assistant) Tim didn't start his journey in theatre from a young age, but he did perform in a production of *Hairspray* at St. Ignatius High School as a handful of smaller characters, and in another local production of *Joseph and the Amazing*

*Technicolor Dreamcoat*, playing the accordion. Those productions introduced him to the wild, wacky, and hectic world of live theatre. He first started working with Magnus Theatre in 2018 on *Back in 59* as a sound assistant under Jean-Paul De Roover of Blueprints Audio. He has done a little bit of everything while working at Magnus, building sets, hanging lights, pitching the saddle-span tent, running sound, controlling cameras, working backstage, and playing accordion on stage. Tim has been involved in several productions at Magnus including: *Back in '59*, *The Rocky Horror Show*, *A Christmas Carol*, *SHOUT! The Mod Musical*, *Home: A Bluegrass Celebration*, *Man of La Mancha*, *Dock Spider*, *Hand to God*, and *Mama's Country Record Collection*. Tim is very grateful to be continuously called back to work at Magnus Theatre. When not working with Magnus he is a private accordion teacher, performer, composer, and free-reed aerophone instrument repairer.





Manage your business. Let us do the rest.

[signaturefinancial.ca](https://signaturefinancial.ca)

# Consumers

FINANCIAL SERVICES

Building life long relationships by putting our client's needs first.

[consumersfinancialservices.ca](https://consumersfinancialservices.ca)

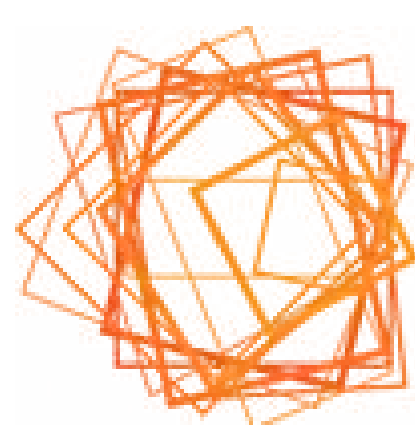


**Magnus Theatre is the only professional theatre company between Winnipeg and Barrie, Ontario.**

Canadian Actors'



Artists engaged in Magnus Theatre productions are members of Canadian Actors' Equity Association, a national association representing artists working in theatre, opera and dance from coast-to-coast-to-coast. Equity's membership includes performers, directors, choreographers, fight directors and stage managers.



**Professional  
Association of  
Canadian Theatres**

Magnus Theatre is a proud member of the Professional Association of Canadian Theatres. PACT is a member-driven organization of professional Canadian theatres which serves as the collective voice of its members for the betterment of Canadian professional theatre.



**Associated  
Designers of  
Canada**

Associated Designers of Canada is a national, professional non-profit arts service organization dedicated to representing the interests of set, costume, lighting, projection and sound designers working in the live performing arts in Canada.

**SOCAN**

music. people. **connected.**

SOCAN is a performing rights society that licenses the public performance and communication of the world's repertoire of copyright-protected musical works in Canada and then distributes royalties to its members and affiliated international societies.



Magnus Theatre engages stagehands and craftspeople who are members of the International Alliance of Theatrical Stage Employees, Moving Picture Technicians, Artists and Allied Crafts of the United States, Its Territories and Canada (IATSE), Local 467.

**Magnus**  
Theatre

**Are you connected with us on Social Media?**



**@MagnusTheatre**



**@MagnusTheatre**

**[www.magnustheatre.com](http://www.magnustheatre.com)**





## THE NEXT STAGE PROJECT CONTINUES!

Magnus Theatre has thrived as Northwestern Ontario's only professional theatre since 1971. With increased demand for programming and arts spaces, Magnus Theatre continues its' mission to enhance arts possibilities within our community.

The Next Stage Project began to restore, upgrade, and expand the Magnus Theatre facility to meet the emerging needs of the community. So far, the project has seen the addition of a brand-new Studio Theatre, expansion and upgrade of all production facilities, an overhaul of the building HVAC systems, all-new public washrooms, lounge, and youth classrooms, all done while carefully maintaining and respecting the heritage features of the Historic Central School. The project continues, as we endeavour to make our heritage building greener and energy efficient, with plans to replace windows, improve the parking lot, convert stage lighting to environmentally friend LED fixtures and upgrade all hearing-assist systems.

The Next Stage Project has been funded in part by the Government of Canada, FedNor, the Northern Ontario Heritage Fund Corporation, the Trillium Community Building Fund, the Trillium Resilient Communities Fund, TBXI and the Thunder Bay CEDC. The project continues to be supported by many private donors and sponsors who believe strongly that professional arts are an integral part of a strong and healthy community.

If you would like to get involved in supporting Magnus Theatre's Next Stage Project and in strengthening the arts scene in Northwestern Ontario, please reach out to Glenn Coulson, Magnus Theatre's Director of Development at [Glenn.Coulson@magnustheatre.com](mailto:Glenn.Coulson@magnustheatre.com), or call 807-345-8033.



# Annual Donations

July 7 2024- July 7 2025

## Major Benefactors between \$2,000.00 & \$1,000,000.00

Jacqueline & Maurice Black  
Kim Koivukoski

## Benefactors between \$500.00 & \$1,999.99

Shelby Ch'Ng  
Evelyn & Bruce Creed  
Susan Southcott & Jean  
Robillard  
Rosalie & Ken Evans  
Philip Jarvis  
Estate of Marie Emeline Landry  
Bruce & Eda Leaman  
Nancy & Glen Rowlinson  
Colliers Project Leaders  
Ernie Epp  
Jim & Sherley-Ann Smith

## Patrons between \$200.00 & \$499.99

Alan Moon Pottery  
Brooke Carfagnini  
Glenn Coulson  
Georgina & William Daniels  
Meagan Ellis  
Allison Hill  
Margaret Wanlin & Bruce Hyer  
Richard & Joan Johns  
Sylvia Kayzer  
Gary & Christina Lofts  
Ed & Beth Long  
Jan Pilley  
Ken Whitney & Marilyn Whitney

## Supporters between \$100.00 & \$199.99

Sean Albanese  
Allstate Insurance  
Joyce Baxter  
Gerald Buckrell  
Paula Ede  
Jeannette & Richard Eras  
Cindy Figus  
Trish Glena  
Trudi Jones  
Angie Maltese & Philippe Hamel  
Marilyn R Marrier-Oborne  
Mary Ann Mountain  
Peter J. Neelands  
Arnie Nurmi  
Dennis & Susan Siczkar  
Deirdre Spain  
Laura Spiller

## Associates between \$1.00 & \$99.99

Diane Borejsza  
Ina Chomyshyn  
Deanna Craig  
Ellen Cramm  
Joyce Fossum  
Jerron Fuchihara  
Peter Globensky & Bev Sabourin  
Debra Gold  
Justus Grunow  
Cathy Jillings  
Roberta Kastern  
Denise Lorraine Krawczuk  
Richard & Mary Jane  
Lewandowski  
Julie Maccoy  
Leslie Maggrah  
Norma A. Otway  
Marion Petersen  
Paula & Greg Ribotto  
Cathy Ridley & Jim Lees  
Carlos Santander-Maturana  
Melissa Rae Sdao  
Elizabeth Shea  
Patti Snowden  
Janet Wright

## Theatre in Education Program

Bruce Achneepineskum  
Marion Biloski  
Gerry Bondy  
Louis & Yvette Bondy  
Delores Burella  
Diane Burella  
Leanne Calsavara  
Faye Peterson House  
Danielle Chandler  
Lillian & Laurie Comeau  
Santina Giardino  
Kathy Gibson  
Janice MacDonald  
Bryan & Anne MacLeod  
Mary Marrion  
Susan Nistico  
Janet Paterson  
Lesli Schelling  
North Winds Farm

## Take Your Seat Campaign

Tammy D'Amours &  
Allstate Insurance  
Form Architecture  
Neil McCartney &  
Atwood Labine LLP Law Office  
The McCartney-Addison Family



Alyssa Biloski  
(In Honour of Tammy D'Amours)

Brickhost

Pamela Cain

(In Honour of John Rafferty)

Sarah Campbell

(In Honour of CB Campbell)

Kirsten M Chlebovec

(In Honour of John Chlebovec)

Shelby Ch'Ng

Glenn Coulson

(In Honour of George Coulson)

Shelley Crawford & David Legge

Robyn Despins

(In Honour of Heather Gray)

Ryleigh Dupuis

Ernie Epp

(In Honour of Trudy Epp)

Larry, Trudi & Gillian Jones

Reg Jones

(In Honour of Marianne Jones)

Caroline Johnstone

(In Honour of Tom & Mary McKinnon)

Kim Koivukoski & Peter Nicholas

Debbie & Steve McAuley

(In Honour of Gary & Lillian Soltys)

Scott McCormack

(In Honour of Lou Voit)

Sharon & Bill McKinnon

(In Honour of Tom & Mary McKinnon)

Liz McKinnon

(In Honour of Tom & Mary McKinnon)

Oak Medical Arts

Robert E Perrier

Memorial Home Hardware

Barbara Saxberg

(In Honour of

Audrey Maycock Saxberg)

Chantal St Jacques Shanks

(In Honour of Gregg Shanks)

Sandra & Greg Snider

Brian Walmark

(In Honour of

Maija Walmark & Louise Wuorinen)

## **Capital Campaign The Next Stage Campaign**

Helen & Greg Alexander

Allstate Insurance

Kirsten M Chlebovec

John Condon

Shelley Crawford & David Legge

Allison Hill

Stephen & Noel Jones

Ken Boshcoff Community

Foundation

Debbie & Steve McAuley

Memorial Home Hardware

Fan Payant & Chris Higgins

Cathy Ridley & Jim Lees

Shannon & Chris Sauer

Sandra & Greg Snider

Signature Financial  
TBXI

## **In Memoriam**

### **In Memory of Elizabeth Ann (Betty Ane) Shuttleworth**

Kal Pristanski

### **In Memory of Carla LaBelle**

Sharon McKinnon

### **In Memory of Alycia Novak**

10 Talent Management

Minna & Peter Novak

Steve Wright

Cheryl Delorenzi

Rita Briska

Sari Edwards

Katherine Delorenzi

Ruth Wright

Beth Wilson-Krawec

Cathy, Bob & the Johnson Family

Fenulla Jiwani

Sandra Legarrie

Robert Schulman

Diane Imrie

Kate Dwyer

Meeri Makenen

Fil Ingram

Marilyn Martens

Leanne Calsavara

Mary Marrion

Lesli Schelling

Kathy Gibson

Faye Peterson House

Susan Nistico

Janice MacDonald

Diane Burella

Delores Burella

Lillian & Laurie Comeau

Santina Giardino

### **In Memory of Shirley Robson**

Gerry Bondy

Susan Prince

Rosanna & Livio Dimatteo

Bill Grant

Diane Skinner

Herbert Kraus

Barry & Erlinda Lahteenmaa

Carol A. Ledoux

Marguerite & Dave Morellato

Alana Rechlin

Thunder Bay Police Youth Corps

Donna Vantaa

Diane van Wagoner

### **In Memory of Burton Lancaster**

Rebecca Lancaster



# Saluting Our Sponsors

## Season Sponsors



## Show Sponsors



## Community Partners



## Pay What You Want Performance Sponsor



## Theatre in Education Sponsor





# Funding Support

Canada



Canada Council  
for the Arts

Conseil des arts  
du Canada



ONTARIO ARTS COUNCIL  
CONSEIL DES ARTS DE L'ONTARIO

---

an Ontario government agency  
un organisme du gouvernement de l'Ontario



An agency of the Government of Ontario  
Un organisme du gouvernement de l'Ontario



*Interested in sponsoring Magnus Theatre?  
Contact our Director of Development, Glenn Coulson  
at [glenn.coulson@magnustheatre.com](mailto:glenn.coulson@magnustheatre.com)*



# TAKE YOUR SEAT

## IN MAGNUS THEATRE HISTORY



Be part of the final act in our Next Stage – Curtain Call campaign by naming a seat in our brand-new Studio Theatre.

**100 SEATS  
AVAILABLE**  
**WITH A GIFT OF  
\$250**

Dedicate a seat in your name, in honour of a loved one, or to celebrate a business or special memory.

Your support helps bring this exciting new space to life—designed for bold, intimate performances and future generations of theatre lovers.

**LEAVE YOUR MARK.  
TAKE YOUR SEAT.**

SCAN TO  
DONATE



**Magnus**  
Theatre

### Supporting Magnus Theatre – What's Right for You?

Magnus Theatre is the only professional theatre in northern Ontario, an important part of the cultural life and economy of Thunder Bay and region, and a wonderful way to spend an evening or afternoon. We work very hard to keep our programs affordable and accessible to our entire community, maintaining some of the **lowest ticket prices for professional theatre in Canada**. As such we rely on donations and the generous support of our patrons and sponsors to maintain our programming. We hope you will consider a gift to Magnus Theatre, helping to fuel professional arts in the North. Your gifts support artists, school tours, productions, and community access across Northwestern Ontario.

**Here are a few ways you can support Magnus Theatre**

#### **Make a Charitable Donation**

- ♦ Fuel bold theatre and outreach programming with a gift that works for you.

#### **Become a Member**

- ♦ Membership connects you to the creative heart of Magnus.

#### **Take a Seat – Leave a Legacy**

- ♦ Name a seat in the Mainstage or Studio Theatre and become part of Magnus history.

For more information about supporting Magnus Theatre, please contact our Director of Development, **Glenn Coulson** at [glenn.coulson@magnustheatre.com](mailto:glenn.coulson@magnustheatre.com)



# Magnus Theatre

## Staff & Board



### MANAGEMENT

Artistic Director ♦ Thom Currie  
Executive Director ♦ Alexis Rowlinson

### THEATRE IN EDUCATION

Theatre in Education Director ♦ Jordan Blaxill  
Theatre in Education Instructors ♦ Jenn McCallion, Hailey Hull

### MARKETING & PUBLICITY TEAM

Social Media Coordinator ♦ Sociable Solutions

### FUNDRAISING & DEVELOPMENT

Director of Development ♦ Glenn Coulson

### PRODUCTION TEAM

Production Manager ♦ Nicholas Palinka  
Lead Technician ♦ Tim Stephenson  
Head Carpenter ♦ David Brown  
Head of Properties ♦ Nadia Cheechoo  
Head of Wardrobe ♦ Lisa Macchione

### ADMINISTRATIVE TEAM

Financial Officer ♦ Shaveh Moores  
Accounting Clerk ♦ Harneet Kaur  
Box Office/Office Administrator ♦ Jessica Krasnichuk  
Box Office Representatives ♦ Sandra Snider, Madison Steadwell  
Patrons Services Manager ♦ Kait Blake  
Front of House Assistants ♦ Martina Vaillant, Shaya Meilleur,  
Kaitlyn Harris  
Bar and Concessions Manager ♦ Jodi Mason  
Facilities Caretaker ♦ Alex Campbell-Belandiuk

### BOARD OF DIRECTORS

President ♦ Nadia La Russa  
Vice President ♦ Cathy Ridley  
Second Vice President ♦ Scott Hobbs  
Treasurer ♦ Meagan Ellis  
Secretary ♦ Neil McCartney

### DIRECTORS

Greg Alexander  
Susan Aris  
Elliott Cromarty  
Tammy D 'Amours  
Ernie Epp  
Trish Glena  
Rob Magnusson



99.9 <sup>THE</sup> BAY

70's, 80's & 90's

*Thunder Bay's*  
**FAVOURITE  
MORNING SHOW**

**WEEKDAYS**

**6:00 AM - 10:00 AM**



**mornings** in the bay  
*with Danny Foresta*