

^W**Magnus.**
Theatre

World Premiere

On Thin Ice

By Drew Hayden Taylor

Feb 12-28, 2026

Magnus Theatre Mainstage

Sponsored by:



Artistic Director
Thom Currie

^W
Magnus
Theatre

Executive Director
Alexis Rowlinson

ON THIN ICE

(World Premiere)

Written by
Drew Hayden Taylor

Directed by
Vinetta Strombergs

Fight Direction by
Richard Comeau

Cast

Grace Lamarche as Rachel Wenasswe

Danik McAfee as Caleb Wenasswe

Scott Carmichael as Rory Lansdale

Cailin Stadnyk as Andrea Lansdale

Set Design	Warden Bémont
Lighting Design	Kirsten Watt

Stage Manager	Gillian Jones
Fight Captain	Danik McAfee
Production Manager	Rebecca Miller
Head Carpenter	David A Brown
Head of Props	Nadia Cheechoo
Head of Wardrobe	Lisa Macchione
Scenic Painter	Lauren Waite
Production Assistant	Tim Walters

~

Special acknowledgement to Juno award-winning artist Murray Porter for pre-show music from his album 1492: Who Found Who? Follow him on Facebook for concert updates.

Videotaping, mobile video, and audio recording of this production are strictly prohibited.

This production of *On Thin Ice* runs approximately 120 minutes including one 15-minute intermission and contains strong language and depictions of violence

ABOUT THE PLAYWRIGHT



Drew Hayden Taylor

Drew Hayden Taylor is a renowned Ojibway writer from Curve Lake First Nation in Ontario who has spent more than 35 years crafting stories that bridge cultures through humour and compelling narratives. With more than 20 plays and 30 books to his credit, he has become a leading voice in what he calls "the contemporary Native Literary Renaissance." His work has graced stages across Canada, the United States, and Europe, earning him numerous

accolades including the prestigious Dora Mavor Moore Award and the Chalmers Award.

Known as a humorist, Taylor's creative range extends into darker, more dramatic territory. His methodical and deliberate creative process involves letting ideas marinate in his mind, developing characters, plot arcs, and structure before ever writing a single word. He builds his characters entirely from the ground up, to create fully realised fictional worlds that serve the needs of each unique story.

Taylor's enthusiasm for theatre stems from the immediate interaction with audiences who have just experienced his work. He treasures the strong and personal reactions that live performance generates, making theatre a particularly meaningful medium for his storytelling. His latest thriller, *On Thin Ice* makes its world premiere at Magnus Theatre from February 12 to 28, 2026. [Read more about Drew Hayden Taylor on his website...](#)

Meet the
Playwright,
**DREW
HAYDEN
TAYLOR**
Saturday Feb 14
@1pm

Before the matinee
performance of "On Thin
Ice". Sponsored by Synergy
North.

FREE EVENT

In special partnership with:

PLAYCONNECT
PGC PLAYWRIGHTS GUILD
OF CANADA



Magnus
Theatre

It's different, every time.

Call 807.345.5552
or visit magnustheatre.com

THE COMPANY



VINETTA STROMBERGS (Director)

Vinetta has directed everything from Shakespeare to musicals to original Canadian plays. Her directing credits include many regional theatres, summer theatres and stages large and small. Most recently, she directed The Thanksgiving Play for the Off-Mirvish season and Sir John A. at the Blyth Festival (another Drew Hayden Taylor play). She is delighted to be back at Magnus--the last time was Drew's play

The Berlin Blues or Welcome to Ojibway World. For many years she helped develop First Nations writers and actors through working with Debajehmujig Theatre on Manitoulin Island and Native Earth Performing Arts in Toronto. Her production of 60 Below for Native Earth garnered 7 Dora Nominations. "A big Miig-wetch to Thom Currie and the whole crew at Magnus, especially 'my right arm' Gillian Jones, and my beautiful cast. Also thanks to my host family Al and Sheena and Hazel. I've had a fabulous time here! Hope you enjoy the show as much as I have."



RICHARD COMEAU (Fight Director)

Richard is an actor, fight director and a Certified Fight Instructor with Fight Directors Canada. He is a stage combat instructor and resident fight director at the Centre for Indigenous Theatre in Toronto. He's also a fight instructor and company member at Rapier Wit Stage and Screen Combat. His work spans across Canada.

Recent theatre credits include Sir John A: Acts of a Gentrified Ojibway Rebellion [by Drew Hayden Taylor], Quiet in the Land, Powers and Gloria (Blyth Festival); Women of the Fur Trade, Liars at a Funeral (Magnus); 1939 (Canadian Stage); King Lear, Much Ado, 1939 (Stratford); Crazy Dave Goes to Town (CIT); 1939 (YES! Theatre).

Fight direction credits include Magnus Theatre; Belfry Theatre; Canadian Stage; Soulpepper Theatre; Shaw Festival; Native Earth; YES! Theatre, to name a few. Richard has also performed on set with Disney/Lucas Films, Discovery Channel, and CBC. He's excited to help tell this story and to be a part of another Magnus season.



At Tbaytel, we believe the arts enhance quality of life and are a key part of building more vibrant communities.

Supporting Magnus Theatre is our way of helping to make our neighbourhood a better place for everyone.

We're in it together

tbaytel for good.

THE COMPANY



GRACE LAMARCHE (Rachel Wenasswe)

Grace (she/her) is a theatre artist of mixed Cree/Eastern European descent, based in Toronto.

Select theatre credits include: Women of the Fur Trade (Magnus Theatre), 1939 (Canadian Stage/The Belfry), Weltamultiek (Paprika Festival), Skyscraper (Paprika Festival), Blood Wedding, Cymbeline, Per Gynt and Engaged (George Brown Theatre

School). Grace is a graduate of George Brown Theatre School. She is thrilled to be back at Magnus Theatre!

DANIK McAFEE (Caleb Wenasswe/Fight Captain)

Danik is a Two-Spirit, Algonquin-mixed and French-Canadian actor and director working across Canada in both French and English. With over a decade of professional experience, Danik is drawn to bold, character-driven storytelling and collaborative processes that centre underrepresented voices on stage.



A graduate of the National Theatre School of Canada's Directing Program, Danik trained under acclaimed artists including Jillian Keiley, Micheline Chevrier, Eda Holmes, and Jackie Maxwell. They also hold diplomas in Musical Theatre Performance from Collège Lionel-Groulx and Randolph College for the Performing Arts.

Selected credits include Come From Away (Gander, Associate Director), Les Zinspiré.e.s 12: Le Nombre Sublime (Théâtre français de Toronto, performer), Les Zinspiré.e.s 13: À la lumière des treize lunes (Théâtre français de Toronto, director), Beautiful Scars(Theatre Aquarius, Assistant Director—workshop), and The Rocky Horror Picture Show (Capitol Theatre, Frank 'N' Furter).

Danik currently serves as Program Manager of the Biindigen Program at Theatre Aquarius, supporting Indigenous artists through creation and mentorship. They are thrilled to join the Magnus Theatre family in the world premiere of *On Thin Ice* as Caleb and are excited to bring this powerful story to life on stage. Follow Danik on Instagram @danikmcafee.

THE COMPANY



CAILIN STADNYK (Andrea Lansdale)

Cailin is an award-winning performer whose career has spanned over 25 years across North America. Most known for her work in musical theatre, some of her career highlights have included lead roles in *Come From Away* (Mirvish & Broadway 1st National Tour); *9 to 5: The Musical* (TIP); *The Full Monty* (Neptune); *A Few Good Men* (Drayton); *Mamma Mia!* (Theatre Aquarius); *Footloose & Waiting for the Parade* (Chemainus);

Mary Poppins (WCT/Persephone); *The (Post) Mistress*, *Bittergirl*, *One Man-Two Guvnors*, *Xanadu*, *Company*, *Singin' In The Rain* & *Funny Girl* (all Arts Club Theatre); *Gunmetal Blues*, *The Last Resort*, *Honk! The Musical* & *Anne of Green Gables* (all Globe Theatre); *Les Misérables*, *The Dreamer's Quest* & *Little Shop of Horrors* (all WCT); *The Love List* & *Fiddler on the Roof* (The Playhouse) and many more. TV/Film credits include *Fubar* (Netflix); *Five Days at Memorial* (Apple TV+); *Mayday* (Discovery); *Station Eleven* (HBO) and *Supernatural* (Warner Bros). When Cailin is not performing, she can be found either in the woods with her dog Lolli or designing more theatre-inspired goods for her Etsy shop "Callboard Collective". Big love to Michael! Check out www.cailinstadnyk.com or follow her on IG | @cailinstadnyk.

SCOTT CARMICHAEL (Rory Lansdale)

Scott is happy to be back in Thunder Bay--the city where his father was born. Scott has been seen on the Magnus stage in *Man of La Mancha* and *Buddy: The Buddy Holly Story*.

Selected theatre credits elsewhere include: *Bright Star* (Mirvish/GTP); *Million Dollar Quartet* (Drayton, Mirvish, Chemainus); *Counrty Roads: The Songs of John Denver* (Drayton); *Buddy: The Buddy Holly Story* (Arts Club, Stage West, Mayfield, WTC, TIP, Aquarius, STC); *The Ballad of Stompin' Tom* (Capitol, STC); *Grease* (WTC); *Ring of Fire* (Chemainus, TIP); *It's a Wonderful Life* (Chemainus); *ELF the Musical* (Chemainus); *Rainy Day People* (VPP); *The Foursome* (Foster Festival); *The 39 Steps* (Rose Brampton); *12 Angry Men* (Rose Brampton).

Select Film/TV: *Mega Brands That Built America* (History); *Justice for MLK - The Hunt for James Earl Ray* (Discovery); *Marine Disasters* (Discovery); *Final 24* (Next Films); *Motive and Murder* (Cineflix).

Thanks to Cecily for her unfailing love and support.





On Thin Ice by Drew Hayden Taylor, Directed by Vinetta Strombergs, Lighting by Kirsten Watt, Set Design by Warden Bémont, Wardrobe Coordinated by Lisa Macchione. Magnus Theatre, February 12-28, 2026

In this photo: Danik McAfee, Grace Lamarche
Photo by Matthew Goertz



ONTARIO **POWER**
GENERATION

Electrifying life in one generation!

BEHIND THE SCENES



THOM CURRIE (Artistic Director)

Thom Currie is an award-winning director, playwright, dramaturg, actor and producer whose work has been seen across Canada and internationally in cities including Paris, London, Amsterdam, Frankfurt and Brussels. His directing and dramaturgy credits include over 100 productions, plus over 50 for young audiences.

Thom currently serves as Artistic Director of Magnus Theatre in Thunder Bay, ON—the only professional theatre between Barrie and Winnipeg. He previously held artistic leadership positions at Stephenville Theatre Festival (NL), Showboat Festival Theatre In The Round (ON), Georgian Theatre Festival (ON), and founded ReallyLittleTheatre (INTL).

Digital Edition of
The Chronicle-Journal

\$16⁹⁵
Only /mth

sign up at
chroniclejournal.com/digital



BEHIND THE SCENES

Kirsten Watt (Lighting Designer)

On Thin Ice marks Kirsten's 23rd lighting design for Magnus, and she's delighted to be back in winter country!

Previous designs for Magnus include: Gaslight, Boeing Boeing, Perfect Wedding, Million Dollar Quartet, Venus in Fur, Night of the Living Dead Live, Doubt, The Hours That Remain, RED, and Hockey Mom, Hockey Dad.

Kirsten has designed elsewhere for: the Shaw Festival, Mayfield Dinner Theatre, Drayton Entertainment, the Segal Centre, Centaur Theatre, Théâtre du Rideau Vert, Neptune Theatre, Watermark Theatre, Gros Morne Theatre Festival, Theatre Baddeck, Sudbury Theatre Centre, Thousand Islands Playhouse, Green Light Arts, Lost&Found Theatre, Carousel Players, Lyndesfarne Theatre Projects, Essential Collective Theatre, Teesri Duniya, Korda Artistic Productions, Hart House Theatre, George Brown Theatre School, Theatre Sheridan, St. Clair College, University of Waterloo, University of Windsor and Concordia University.

She studied theatre at the University of Alberta, and lighting design at the National Theatre School of Canada and she resides in Windsor, Ontario.

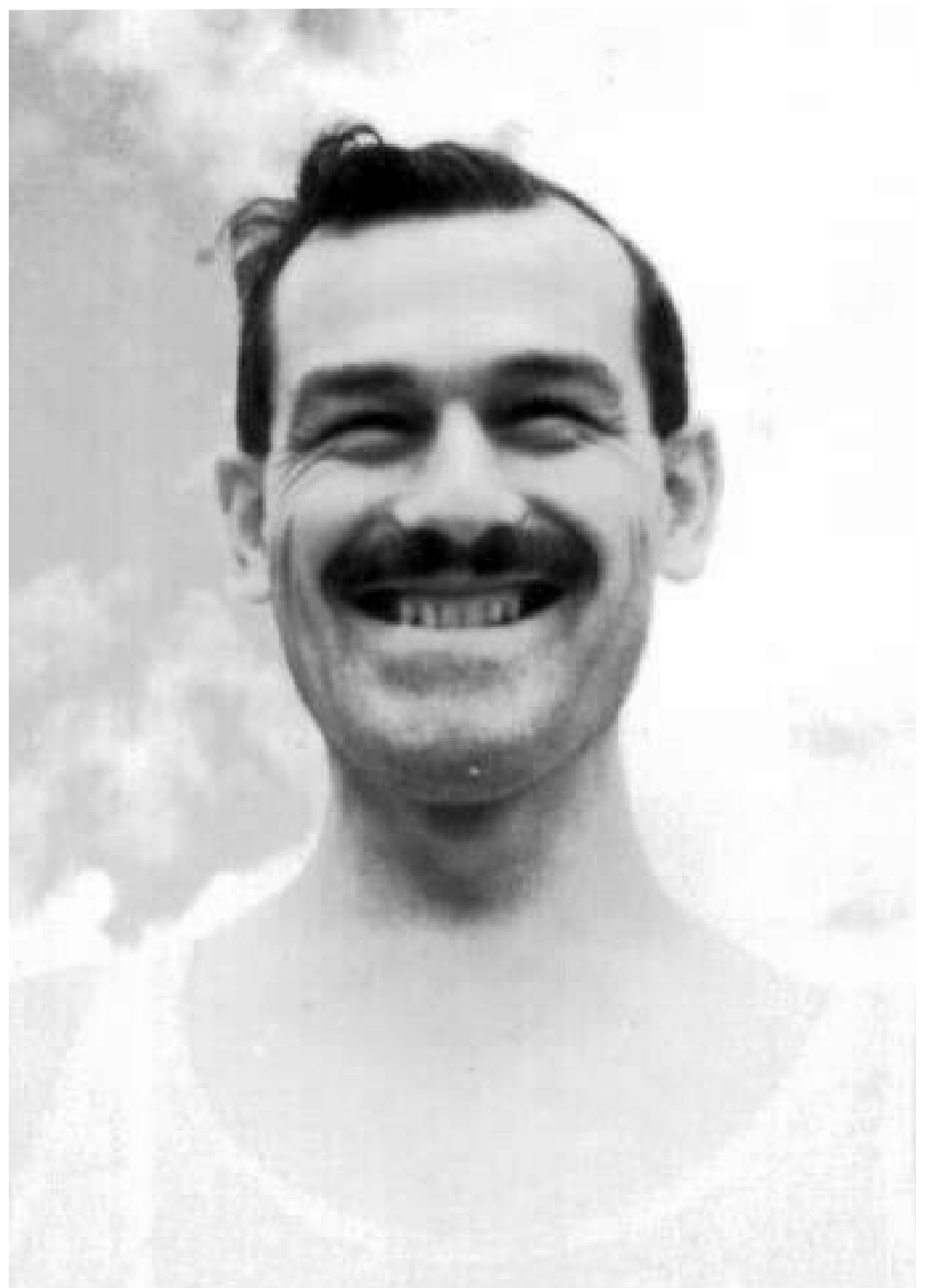


WARDEN BÉMONT (Set Designer)

Warden has been designing sets, costumes, lights and sound in theatres across Canada since 1991.

In addition to multiple designs for Magnus (including The Rocky Horror Show, Only Drunks & Children Tell The Truth, Meet My Sister), some of Ward's favourite designs include production design on Peter Pan, A Bench In The Sun (Georgian Theatre), set design on A Closer Walk With Patsy Cline and Blue Champagne (Stephenville Theatre Festival), Last of the Red Hot Lovers, Back In 59, Mama's Country Record Collection (Showboat Festival) and Urinetown (Theatre Aurora).

Warden lives in Owen Sound and does his best to speak only in French at home. He is very happy to work with Thom and Magnus Theatre again. Warden feels they have come a long way since Kleines verlorenes Kaninchen and El espantapájaros sentimental in the early 90s.



99.9 ^{THE} BAY

70's, 80's & 90's

Thunder Bay's
FAVOURITE
MORNING SHOW

WEEKDAYS

6:00 AM - 10:00 AM



mornings in the bay
with Danny Foresta

BEHIND THE SCENES



REBECCA MILLER (Interim Production Manager)

Rebecca has worked across the country for the past 33 years with the National Arts Centre English Theatre, Citadel Theatre Edmonton, Shaw Festival Niagara-on-the-Lake, Stratford Festival, Mirvish Productions, and Great Canadian Theatre Company Ottawa.

Her productions with Magnus Theatre include *Of Human Bondage*, *We Will Rock You*, and *Elf the Musical*.

At Third Wall Theatre Ottawa, she designed "*Top Girls*" (Best Design LX Rideau Awards) and "*Henry V*" (nominated Best LX Design Rideau Awards). Her teaching credits include Grentell Campus at Memorial University of Newfoundland, University of Toronto, National Theatre School of Canada, and University of Lethbridge.



GILLIAN JONES (Stage Manager)

This is my bio all about how, my life got flipped turned upside down and I'd like to take a moment before the show starts to tell you how I became involved in the live arts. In North

Thunder Bay, I was born and raised. On a playground is where I spent most of my days. Chillin out max and relaxin all cool, but never shootin' B-ball outside of the school. When a couple of folks who were up to some good, started a rehearsal in my ney foss uras eager to offer me a job here at Magnus Theatre.



NADIA CHEECHOO (Head of Props)

Nadia Cheechoo is an Indigenous woman from Wik-wemikong, Ontario. She is back at Magnus Theatre, adding yet another position to her repertoire. She has had previous props experience working in film, but this is her first time in this position at Magnus.

With carpentry and wardrobe already under her belt, she's ready to continue honing old and new skills. Then she plans to carry those skills into future shows, theatres, and film projects. Magnus Theatre has been a major stepping stone in her career as an artist, and she hopes to continue to share her skills with them and others.

91-5 ckpr

THUNDER BAY'S RADIO STATION



CKPR.COM

BEHIND THE SCENES



LISA MACCHIONE (Head of Wardrobe)

Lisa is a passionate devotee of the performing arts and all things adornment.

In 1999 she graduated from Seneca College's Fashion Arts program and has had the opportunity to use her skills in costuming to work on set of local films, historical reenactments, as well as her own performance art. Researching characters, creating one-of-a-kind

pieces, and the spark of a thrift store treasure hunt are what she enjoys most. She is thrilled to be a part of the team at Magnus Theatre.



DAVID A. BROWN (Head Carpenter)

David joined Magnus in 2019 as the Head Carpenter after working as the canoe builder/shipwright at Old Fort William for 40 years.

Dave wore many hats while at the Fort, building canoes and boats. He has been involved in many movie and television productions, from an IMAX production in the early 1980's to many commercials

and print productions, appearing in National Geographic and the National Enquirer in the same year.

He was heavily involved in "The Haunted Fort" building props, animatronic effects and lighting as a licensed pyrotechnician. Dave is getting used to building square and level; he would still like everything to be curved like a canoe or boat.



TIM WALTERS (Production Assistant)

Tim started his journey in professional theatre in 2018 with Magnus on the show "Back in '59" and has been continuously learning and expanding his knowledge in the theatre world ever since. He has worked on productions backstage like "Dock Spider", "Hand to God", "Liars at a Funeral", and "Elf". He's also been the audio / lighting tech on productions like "Home: A Bluegrass Musical", "Mama's

Country Record Collection", "Tell Me On A Sunday", and "Lies and Legends: the Musical Stories of Harry Chapin". Tim is always glad to be back at Magnus Theatre helping create the magic behind the scenes.



Manage your business. Let us do the rest.

signaturefinancial.ca

Consumers

FINANCIAL SERVICES

Building life long relationships by putting our client's needs first.

consumersfinancialservices.ca

The Only Professional Theatre Company Between Winnipeg and Barrie

Canadian Actors'



Artists engaged in Magnus Theatre productions are members of Canadian Actors' Equity Association, a national association representing artists working in theatre, opera and dance from coast-to-coast-to-coast. Equity's membership includes performers, directors, choreographers, fight directors and stage managers.



Magnus Theatre is a proud member of the Professional Association of Canadian Theatres. PACT is a member-driven organization of professional Canadian theatres which serves as the collective voice of its members for the betterment of Canadian professional theatre.



Associated Designers of Canada is a national, professional non-profit arts service organization dedicated to representing the interests of set, costume, lighting, projection and sound designers working in the live performing arts in Canada.



SOCAN is a performing rights society that licenses the public performance and communication of the world's repertoire of copyright-protected musical works in Canada and then distributes royalties to its members and affiliated international societies.



Magnus Theatre engages stagehands and craftspeople who are members of the International Alliance of Theatrical Stage Employees, Moving Picture Technicians, Artists and Allied Crafts of the United States, Its Territories and Canada (IATSE), Local 467.

UP NEXT!



JESUS CHRIST SUPERSTAR

Music by Andrew Lloyd Webber

Lyrics by Tim Rice

Directed & Choreographed by Julie Tomaino

Musical Director Danny Johnson

Mar 26-Apr 18, 2026

Magnus Theatre Mainstage

Magnus
Theatre

JESUS CHRIST SUPERSTAR

Music by Andrew Lloyd Webber and Lyrics by Tim Rice

A groundbreaking and thrilling rock opera based on the final week in the life of Jesus, Jesus Christ Superstar has wowed audiences for over 50 years. Written by Andrew Lloyd Webber and Tim Rice, directed and choreographed by Julie Tomaino with musical direction by Danny Johnson, this brand new production will feature a cast of powerhouse Canadian artists, exploring the story on a level that will transcend notions of traditional roles while raising the roof at Magnus Theatre. Jesus Christ Superstar will be a once in a lifetime experience.

March 26 - April 18, 2026

Magnus Theatre Mainstage

Get your tickets, [HERE!](#)

For accessible seating, please call the Box Office (807) 345-5552

Box Office Hours: Monday, Wednesday & Friday 12pm-3pm

Annual Donations

February 5, 2025 - February 5, 2026

Benefactors between \$2000.00 & \$10,000.00

Larry Jones
Jim and Judy Thiessen

Benefactors between \$500.00 & \$1,999.99

Bruce & Eda Leaman
Cathi Winslow & John Condon
Colliers Project Leaders
Estate of Marie Emeline Landry
Greg & Helen Alexander
McPhail / Kilborn
Nancy & Glen Rowlinson
Philip Jarvis
Shelby Ch'ng
Susan Southcott
The Estate of Dr. Peter J.
Neelands

Patrons between \$200.00 & \$499.99

Brooke Carfagnini
Don Kamula
Ed & Beth Long
Ernie Epp
Lucy Laframboise
Meagan Ellis
Paul and Margaret Capon
Richard & Joan Johns
Susan Aris
Sylvia Kayzer
Trudy Jones

Supporters between \$100.00 & \$199.99

Angela Towedo
Arnie Nurmi
Bonnie Yule and Alan Sparkes
Carol Rusak
Cindy Figus
Deirdre Spain
Dennis and Susan Siczkar
Gary & Christina Lofts
Georgina & Bill Daniels
Glenn Coulson
Jan Pilley
Keith and Cathy
Ken A. and Marilyn Whitney
Laura Spiller
Marie Valley
Marilyn R. Marrier-Osborne
Mary-Ann Mountain
Paula Ede
Tina and Mike Zussino
Trish Glena

For information on how to contribute to Magnus, contact:
Glenn Coulson, Director of Development at
glenn.coulson@magnustheatre.com

Annual Donations

February 5, 2025 - February 5, 2026

Associates between \$1.00 & \$99.99

Abbey Sprickerhoff	Julia Latoski
Abby & Lucy	K. Busch
Allstate	Kai A.
Angie Maltese	Karen Harju
Aynsley Klassen	Kristy Baxter
Barb Walberg	Krystal & Judy Prokosh
Bill and Nancy Ringham	Krystal Murray
Brenda Kehoe	L. King
Brenda Seabrook	Lois Fenton
Brooke Pilley	Marion P.
Carolyn Cameron	Mark Maronese
Cathy Jillings	Marlene Lindsay
Cathy Ridley and Jim Lees	Mary Jane Lewandowski
Chengning Li	Meladina Hardy
Choco	Melanie Maunula
Chuck Brown	Mike Fabius
Cindy Dunning	Monica Poile
Darrell and Melissa Sdao	Nicole Chandler
David A.	Norma and Lorne Otway
David Ford	NOTT
David Giuliano	Oliver and Brenda Reimer
Deanna Craig	Onesime
Deano Michieli	Orion Atkinson
Donald MacDonald	Pam Burton
Donald MacDonald	Pat Piaskowski
Elizabeth Shea	Paul Moore
Emily Biloski	Pauline Mascarin
Eugene Sacevichail	Rhonda & Aaron Skillen
Gail Willis	Rikki & Trye Hardison
Gerry and Lucy	Robert and Sharon Paterson
Gordon Holloway	Roddy Larocque
Greg Anderson	Rosemarie North
Griff	Shirley
In Honour of Kramer & Foster families	Sue and Evan Simpson
from Francoise Payant	Sue Blott
Ina Chomyshyn	Susan Taylor
Jeff & Anna Sampson	Suzanne Hanlon
Jenn Lawr	Talia Kean
Jennifer Barrow	Tammy Scholz
Jennifer Keating	Teri Nelson
Jenny Roth	Thomas Trist
Jocelyn Claybourne	Vincenzo Ricco
Judy Read	Yeticouture
Johnny Barnstorf	
Joyce Fossum	

For information on how to contribute to Magnus, contact:
Glenn Coulson, Director of Development at
glenn.coulson@magnustheatre.com

Theatre in Education Supporters

IN MEMORIAM

Bruce Achneepineskum

Bryan and Anne MacLeod

Danielle Chandler

Janet Paterson

Kiwanis Club of Thunder Bay

Marion Biloski

Miss Avery Lee

North Winds Farm

In Memory of Shirley Robson
Gerry Bondy

In Memory of Sierra Hoppe
Jenna Hoppe

In Honour of George Coulson
Glenn Coulson

In Honour of Dr. Peter Neelands
Peter and Diane Boyle
E.Maurer

For information on how to contribute to Magnus, contact:
Glenn Coulson, Director of Development at
glenn.coulson@magnustheatre.com

The logo for Magnus Theatre in Education features the word "Magnus" in a large, bold, yellow font with a small crown icon above the 'M'. Below it, the words "Theatre in Education" are written in a smaller, white, sans-serif font.

Grimm Tales: Twists, Trials & Talking Wolves

March Break Theatre Camp

March 16th - 20th | 9AM - 4PM | Ages 6-12 | \$250

**REGISTRATION IS
OPEN!**

For more information
and to sign up online,
head to the TIE
page on the Magnus
Theatre website:

[HERE!](#)





THE NEXT STAGE PROJECT CONTINUES!

Magnus Theatre has thrived as Northwestern Ontario's only professional theatre since 1971. With increased demand for programming and arts spaces, Magnus Theatre continues its' mission to enhance arts possibilities within our community.

The Next Stage Project began to restore, upgrade, and expand the Magnus Theatre facility to meet the emerging needs of the community. So far, the project has seen the addition of a brand-new Studio Theatre, expansion and upgrade of all production facilities, an overhaul of the building HVAC systems, all-new public washrooms, lounge, and youth classrooms, all done while carefully maintaining and respecting the heritage features of the Historic Central School. The project continues, as we endeavour to make our heritage building greener and energy efficient, with plans to replace windows, improve the parking lot, convert stage lighting to environmentally friend LED fixtures and upgrade all hearing-assist systems.

The Next Stage Project has been funded in part by the Government of Canada, FedNor, the Northern Ontario Heritage Fund Corporation, the Trillium Community Building Fund, the Trillium Resilient Communities Fund, TBXI and the Thunder Bay CEDC. The project continues to be supported by many private donors and sponsors who believe strongly that professional arts are an integral part of a strong and healthy community.

If you would like to get involved in supporting Magnus Theatre's Next Stage Project and in strengthening the arts scene in Northwestern Ontario, please reach out to Glenn Coulson, Magnus Theatre's Director of Development at Glenn.Coulson@magnustheatre.com, or call 807-345-8033.

Next Stage Capital Campaign Supporters

Allison Elizabeth Hill	Memorial Ave Home Hardware
Alyssa Biloski (In honour of Tammy D'Amours)	Nancy and Glen Rowlinson (in honour of Irene Davenport's Birthday)
Barbara Saxberg (In honour of Audrey Maycock Saxberg)	Neil McCartney & Atwood Labine LLP Law Office
Brian Walmark (In honour of Maija Walmark & Louise Wuorinen)	Oak Medical Arts
Brickhost	Pamela Cain (In honour of John Rafferty)
Caroline Johnstone (In honour of Tom & Mary McKinnon)	Peter Nicholas
Cathy Ridley & Jim Lees	Rajni Agarwal
Chantal St Jacques Shanks (In honour of Gregg Shanks)	Reg Jones (In honour of Marianne Jones)
Chartwell Select Thunder Bay	Robert E Perrier
Dan Newton and Sally Colquhoun	Roberta Kastern
Dave & Shirley Dunk	Robyn Despins (In honour of Heather Gray)
Debbie & Steve McAuley	Ryleigh Dupuis
Debbie & Steve McAuley (In honour of Gary Soltys, Lillian Soltys, and Eugene Soltys)	Sandra & Greg Snider
Dina Morrone	Sarah Campbell (in honour of CB Campbell)
Ernie Epp (In honour of Trudy Epp)	Sarah Kerton and Chris Houle - Neighbourly Realty Thunder Bay Inc.
Fan Payant & Chris Higgins	Scott McCormack (In honour of Lou Woit)
FormStudio Architects Inc.	Sharon McKinnon (In honour of Tom & Mary McKinnon)
Glenn Coulson & Associates Fundraising Inc. (In honour of George Coulson & Peter Whitel)	Shelby Ch'Ng
Helen & Greg Alexander	Shelley Crawford/Legge Crawford Fund
Iain Angus in honour of Marlene Lindsay	Shelley Crawford & David Legge
John Raymond Condon	Signature Financial
Ken Boshcoff Foundation	Stephen & Noel Jones
Kim Koivukoski	Tammy D'Amours - AllState (Board Member) (in honour of Tammy's Troupe)
Kirsten Chlebovec (In honour of John Chlebovec)	Tbaytel
Larry Jones	TBXI Xerox
Liz McKinnon (In honour of Tom & Mary McKinnon)	Trudi Jones
Maija Walmark (In honour of Brian Walmark)	
McCartney-Addison Family	

Show Your Support for **THE ONLY PROFESSIONAL THEATRE IN NORTHWESTERN ONTARIO**

Magnus Theatre is an important part of cultural life and the economy in Thunder Bay, with **some of the lowest ticket prices for professional theatre** in Canada.

~

**Our programs are:
Affordable ~ Accessible ~ A great time!**

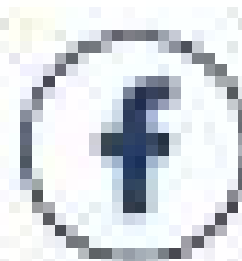
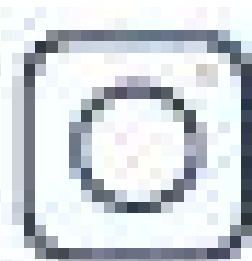
Fuel professional arts in the North with a gift to Magnus Theatre. **Artists, school tours, mainstage productions, and community access** across Northwestern Ontario is fueled by your support.

~

**Make a Charitable Donation
Become a Member
Take a Seat - Leave a Legacy**
(Name a seat in the Mainstage or Studio Theatre and become part of Magnus history.)

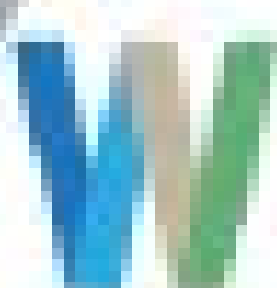
~

For more information, please contact:
Glenn Coulson, Director of Development at
glenn.coulson@magnustheatre.com



EAT
SHOP
PLAY
STAY

@tboywaterfront



WATERFRONT
DISTRICT

SEASON SPONSORS

The logo for tbaytel, featuring the word "tbaytel" in a blue, lowercase, sans-serif font.The logo for The Chronicle Journal, featuring the words "The Chronicle Journal" in a black, serif font, with a sunburst graphic to the left of the word "Chronicle".The logo for dougallmedia, featuring the word "dougallmedia" in a blue, lowercase, sans-serif font, with a grey swoosh graphic above the word "dougall".The logo for ACADIA BROADCASTING, featuring the word "ACADIA" in a large, blue, sans-serif font, with "BROADCASTING" in a smaller, grey, sans-serif font below it, and a red maple leaf graphic above the word "ACADIA".

SHOW SPONSORS

The logo for SYNERGY NORTH, featuring a stylized blue and black geometric icon to the left of the words "SYNERGY NORTH" in a bold, blue, sans-serif font, with the tagline "THE POWER OF THE NORTH" in a smaller, black, sans-serif font below it.The logo for Country 105, featuring the word "Country" in a yellow, cursive font, "105" in a large, blue, sans-serif font, and "THUNDER BAY'S COUNTRY" in a smaller, black, sans-serif font below it.The logo for 99.9 THE BAY, featuring the text "99.9 THE BAY" in a large, orange, sans-serif font, with "70's, 80's & 90's" in a smaller, orange, sans-serif font below it.The logo for 91-5 ckpr, featuring the text "91-5 ckpr" in a large, yellow, sans-serif font, with "THUNDER BAY'S RADIO STATION" in a smaller, black, sans-serif font below it.The logo for ROCK 94, featuring the words "ROCK 94" in a large, bold, black and red, sans-serif font, with "Thunder Bay's Rock Station" in a smaller, black, sans-serif font below it.

COMMUNITY PARTNERS

Ken Boshcoff
Community Trust

The logo for SUPERIOR GAMING SHORES ASSOCIATION, featuring a blue lighthouse graphic above the words "SUPERIOR GAMING" and "SHORES ASSOCIATION" in a blue, sans-serif font.

For more information, please contact:

Director of Development, Glenn Coulson at glenn.coulson@magnustheatre.com

FUNDING SUPPORT

Ontario



Ontario
Trillium
Foundation



Fondation
Trillium
de l'Ontario

An agency of the Government of Ontario
Un organisme du gouvernement de l'Ontario

Canada



CITY OF
Thunder Bay
Superior by Nature



ONTARIO ARTS COUNCIL
CONSEIL DES ARTS DE L'ONTARIO
an Ontario government agency
un organisme du gouvernement de l'Ontario

**YOUR LOGO
COULD BE HERE!**



Canada Council
for the Arts

Conseil des arts
du Canada

PAY WHAT YOU WANT COMMUNITY SPONSOR

Signature
FINANCIAL

THEATRE IN EDUCATION SPONSORS



Kiwanis
KIWANIS CLUB OF WESTFORT

ONTARIOPOWER
GENERATION

For more information, please contact:

Director of Development, Glenn Coulson at glenn.coulson@magnustheatre.com

TAKE YOUR SEAT

IN MAGNUS THEATRE HISTORY



Be part of the final act in our Next Stage – Curtain Call campaign by naming a seat in our brand-new Studio Theatre.

**100 SEATS
AVAILABLE**

**WITH A GIFT OF
\$250**

Dedicate a seat in your name, in honour of a loved one, or to celebrate a business or special memory.

Your support helps bring this exciting new space to life—designed for bold, intimate performances and future generations of theatre lovers.

**LEAVE YOUR MARK.
TAKE YOUR SEAT.**

SCAN TO
DONATE



Magnus
Theatre

Which Path is Right for You?

Magnus Theatre is the only professional theatre in northern Ontario, an important part of the cultural life and economy of Thunder Bay and region, and a wonderful way to spend an evening or afternoon. We work very hard to keep our programs affordable and accessible to our entire community, maintaining some of the lowest ticket prices for professional theatre in Canada. As such, we rely on donations and the generous support of our patrons and sponsors to maintain our programming. We hope you will consider a gift to Magnus Theatre, helping to fuel professional arts in the North. Your gifts supports artists, school tours, productions, and community access across Northwestern Ontario.

Make a Charitable Donation

Fuel bold theatre and outreach with a gift that works for you.

Become a Member

Membership connects you to the creative heart of Magnus.

Take a Seat - Leave a Legacy

Name a seat in the Mainstage or Studio Theatre and become part of Magnus history.

For more information, please contact:

Director of Development, Glenn Coulson at glenn.coulson@magnustheatre.com

Magnus Theatre

Staff & Board of Directors



MANAGEMENT

Artistic Director | Thom Currie

Executive Director | Alexis Rowlinson

THEATRE IN EDUCATION

Theatre in Education Director | Jordan Blaxill

Theatre in Education Instructors | Jenn McCallion

TYA Tour Coordinator | Shannon Vancook

MARKETING & PUBLICITY TEAM

Marketing & Publicity Coordinator | Robyn Saxberg

Social Media Coordinator | Sociable Solutions

FUNDRAISING & DEVELOPMENT

Director of Development | Glenn Coulson

PRODUCTION TEAM

Interim Production Manager | Rebecca Miller

Head Carpenter | David Brown

Head of Properties | Nadia Cheechoo

Head of Wardrobe | Lisa Macchione

Production Assistant | Tim Walters

Scenic Painter | Lauren Waite

ADMINISTRATIVE TEAM

Financial Officer | Nadia Kukkee

Box Office/Office Administrator | Jessica Krasnichuk

Box Office Representative | Sandra Snider

Patrons Services Manager | Kait Blake

Front of House Assistants | Martina Vaillant, Shaya Meilleur, Kaitlyn Harris, Casey Rowlinson

Bar and Concessions Manager | Jodi Mason

Facilities Caretaker | Alex Campbell-Belandiuk

BOARD OF DIRECTORS

President | Cathy Ridley

1st Vice President | Scott Hobbs

2nd Vice President | Greg Alexander

Treasurer | Meagan Ellis

Secretary | Neil McCartney

Human Resources Officer | Trish Glena

Director | Susan Aris

Director | Elliott Cromarty

Director | Tammy D'Amours

Director | Ernie Epp

Director | Dely Goicochea

Director | Robert Magnusson